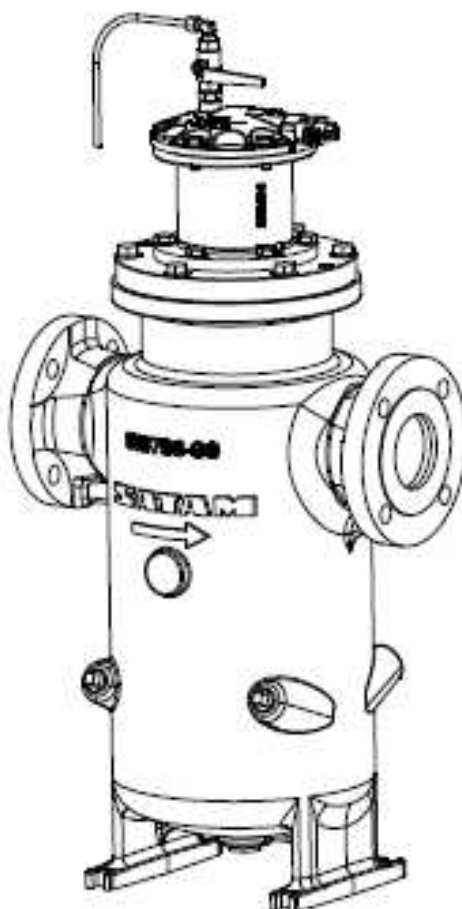


STRAINER AIR ELIMINATOR
EC 31- EC 32 - EC 39
Description – Installation
Servicing

SPARE PARTS LIST

U517175-e – Revision 1 – 13 October 2011



This document consists of **10** pages, including the flyleaf

This document is the property of SATAM
And can't be transmitted to someone also with out prior authorisation

SATAM may modify this document without prior notice

In conformity with the European directive 94/9/CE-ATEX

SUMMARY

STRAINER AIR ELIMINATOR EC 31,EC 32 AND EC 39.....	3
1. <i>Description</i> :.....	3
2. <i>Mechanical air separator head</i>	3
3. <i>Electrical air separator head</i>	3
4. <i>Instructions for mounting</i> :.....	3
5. <i>Instructions for use</i> :.....	4
6. <i>Instructions for maintenance</i> :.....	4
DIMENSIONS OF ENCOMBREMENT OF THE EC 31 AND EC 32.....	5
DIMENSIONS OF ENCOMBREMENT OF THE EC 39	6
SPARE PARTS LIST STRAINER AIR ELIMINATOR EC 31 ET EC 32	7
SPARE PARTS LIST STRAINER AIR ELIMINATOR EC 39	8
SPARE PARTS LIST ELECTRICAL AIR SEPARATOR HEAD	9
SPARE PARTS LIST ELECTRICAL AIR SEPARATOR HEAD	10

1. Description :

The strainer air eliminator EC 31, EC 32 et EC 39 is equipped with a filter basket (ref. 436846 for a filtration of 50 μ , 436847 for a filtration of 100 μ , 438480 for a filtration of 200 μ and 438481 for a filtration of 450 μ for the EC 31 and EC 32 and 438113 for a filtration of 50 μ , 438111 for a filtration of 200 μ and 438110 for a filtration of 450 μ for the EC 39) and set up vertically allowing the elimination of any foreign body which could disturb its functioning. It is composed of a cylindric tank, with the linking flanges of the input/output manifolds. The tank is closed at its top side by a mechanical or electrical air separator head according to the following characteristics:

2. Mechanical air separator head

- evacuation of the gaz

When the tank is full of liquid, the float assures the closing of the gaz evacuation hole. If there is a stock breaking off, the pump sends an air pocket into the drain-cock. The level of the liquid in the tank decreases and the float, while lowering, releases the gaz evacuation hole which is constantly submitted to the air.

3. Electrical air separator head

- Evacuation of the gaz
- The control of a valve placed at the outlet of a continuous meter to which the strainer eliminator is associated. This control is done by a magnet and a switch reed.

When the tank is full of liquid, the float assures the closing of the gaz evacuation hole and keeps the magnet on a high position. The magnet switches off the ignition and this allows the opening of the valve placed below the meter.

If there is a stock breaking off, the pump sends an air pocket into the drain-cock. The level of the liquid in the tank decreases and the float, while lowering, releases the gaz evacuation hole, the magnet moves away from the switch which puts on the ignition and then the closing of the valve placed below the meter. The opening of this valve will be possible again only after the evacuation of the gaz from the tank.

4. Instructions for mounting :

The diagram of the installation area must be settled, The material SATAM, the installation and security procedures must be in conformity with the ATEX 94/9/EC regulation.

The components fitting into a measuring unit which are delivered separately must respect an existing agreement or must be integrated into a measuring unit which is submitted to an authorization of installation or bringing into service.

SATAM

Make sure of the coaxiality of the input /output flanges on which the strainer eliminator will be fitted. Make sure of the good positioning and maintaining of the plate gaskets of the flanges (provided separately or mounted).

During the first use or following maintenance works, in the case of an electrical strainer, open the purge tap located on the top of the separator head in order to purge the circuit. As soon as the fluid has a continuous flow, shut off the tap.

5. Instructions for use :

The installation must be equipped with decompression devices to avoid any overpressure weighing down the recommendation on the material SATAM .

The installation and the running will avoid waterhammer and vibrations of the equipment. The installation will be progressively brought into service.

The owner of the installation must be sure that the users know and will respect the conditions of use and security of the material SATAM in the frame of the current regulations.

The operating pressure must never exceed 10 bar.

6. Instructions for maintenance :

The installation must be regularly checked and controlled by skilled and qualified staff. The conditions of the current regulations must be respected.

Any intervention which involves the break of a sealing must be run according to the current metrologic regulation.

Before any maintenance operation, isolate the gas strainer eliminator with the valves located below and above of it and then purge the strainer in opening the hole located under the bonbonne intended to this effect.

Periodically, verify the state of the strainer (every 3 months). Not being this one in Stainless steel, a thorough clean-up is imperative.

Every 6 months, verify the cover gasket N°27486 and the strainer gasket N°363793 for the EC 31 and EC 32 and the joint of the lid N ° 504764 for the EC 39. If need be, change these gaskets during the verifications.

During each dismounting, change the manifold gaskets n°354926 for the EC 31 and EC 32, and N ° 357796 for the EC 39.

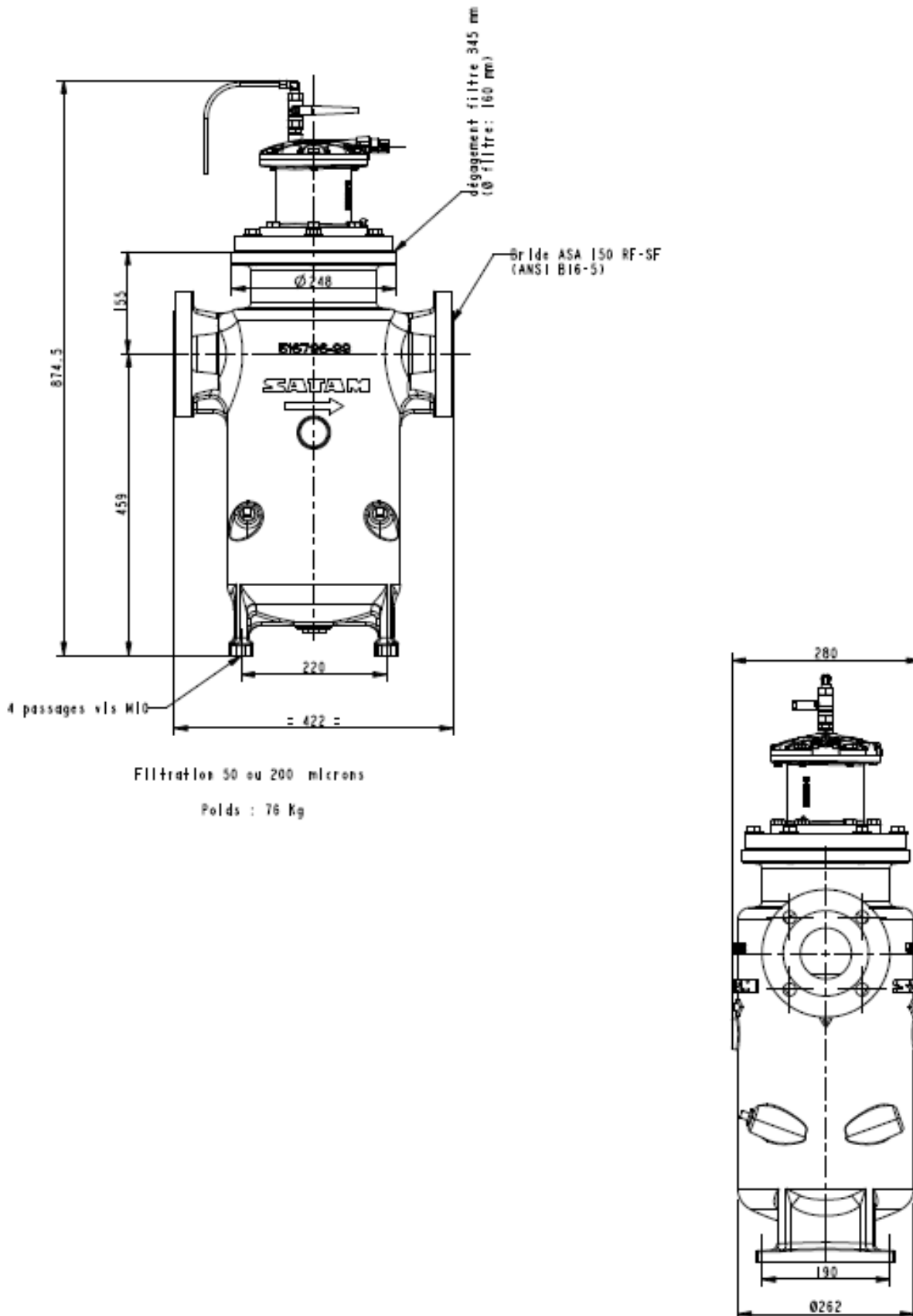
Change the following spare parts every year or during maintenance or verifications :

- gasket 363616 and 363189
- gasket 27149
- valve gasket 356262
- gasket 364469

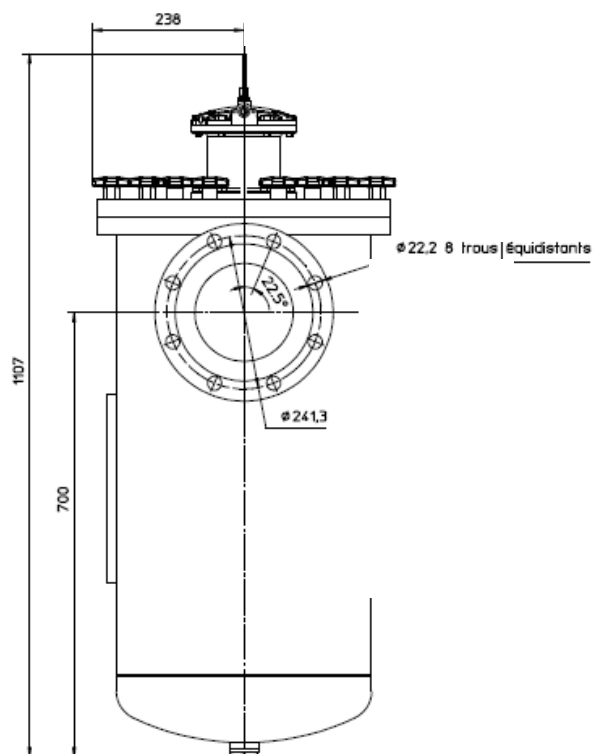
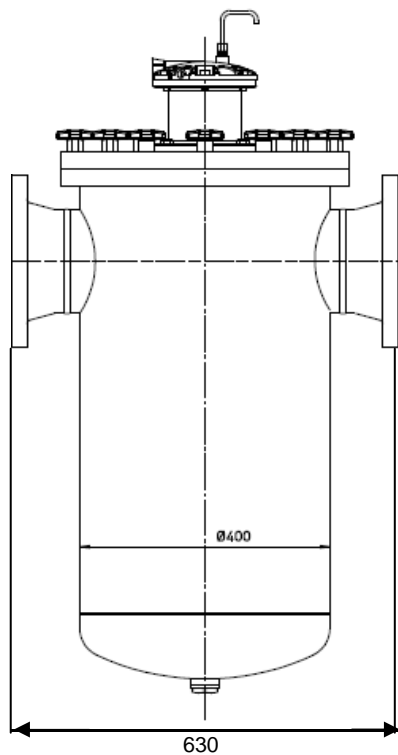
Take off the flings on the magnet 353605

Use exclusively screw size 8.8 for all fixation screws.

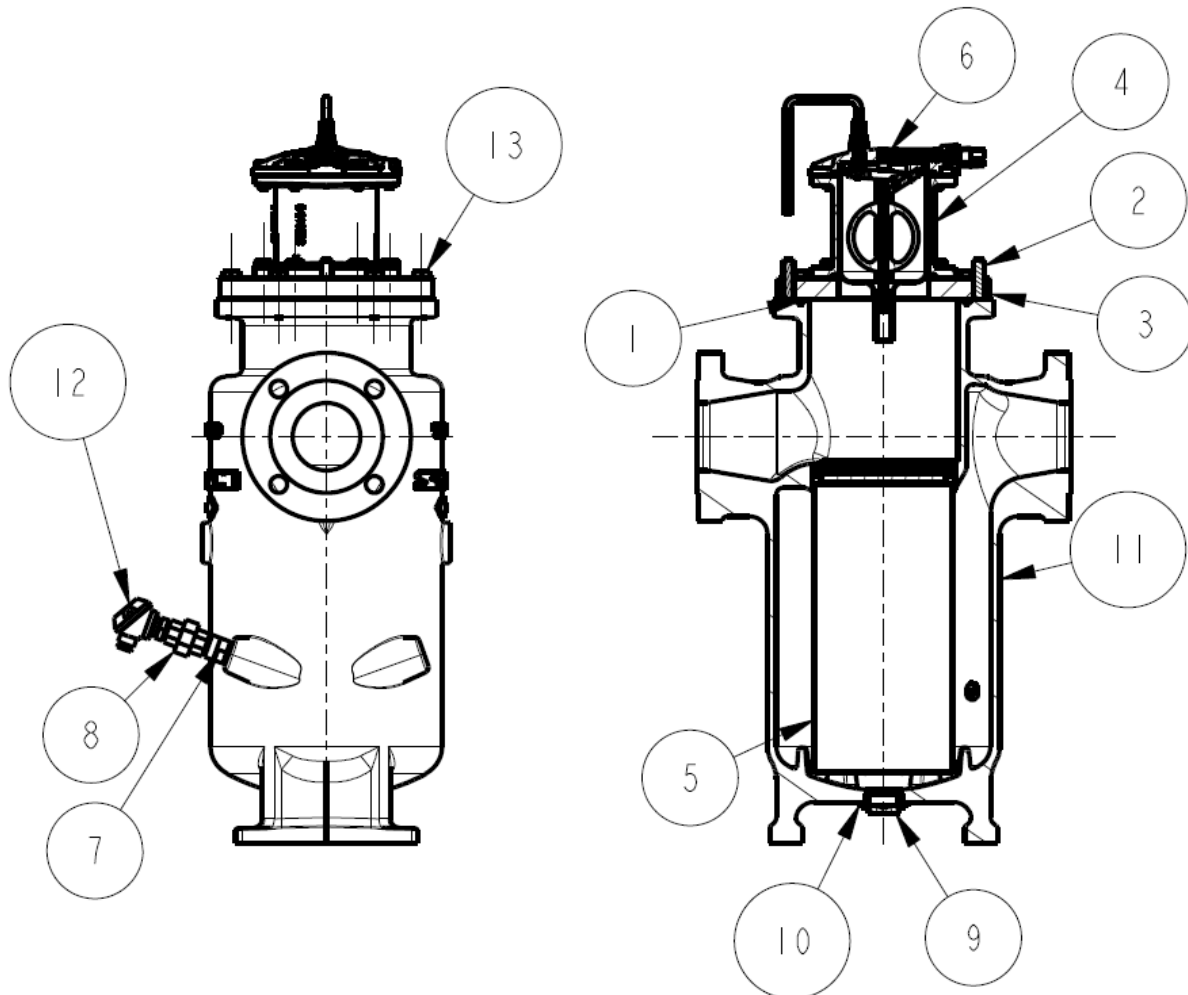
DIMENSIONS OF ENCOMBREMENT OF THE EC 31 AND EC 32



DIMENSIONS OF ENCOMBREMENT OF THE EC 39

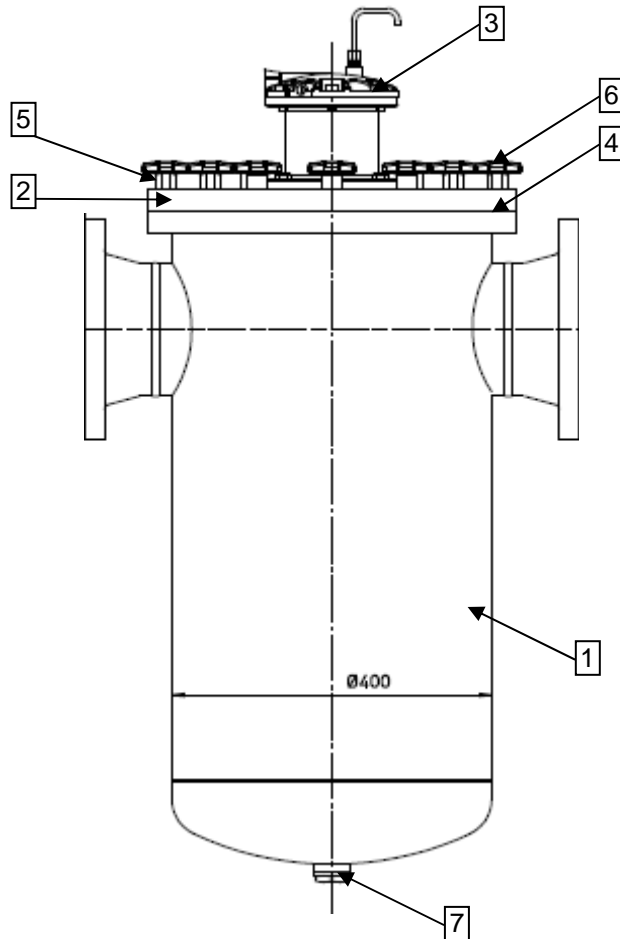


SPARE PARTS LIST STRAINER AIR ELIMINATOR EC 31 ET EC 32



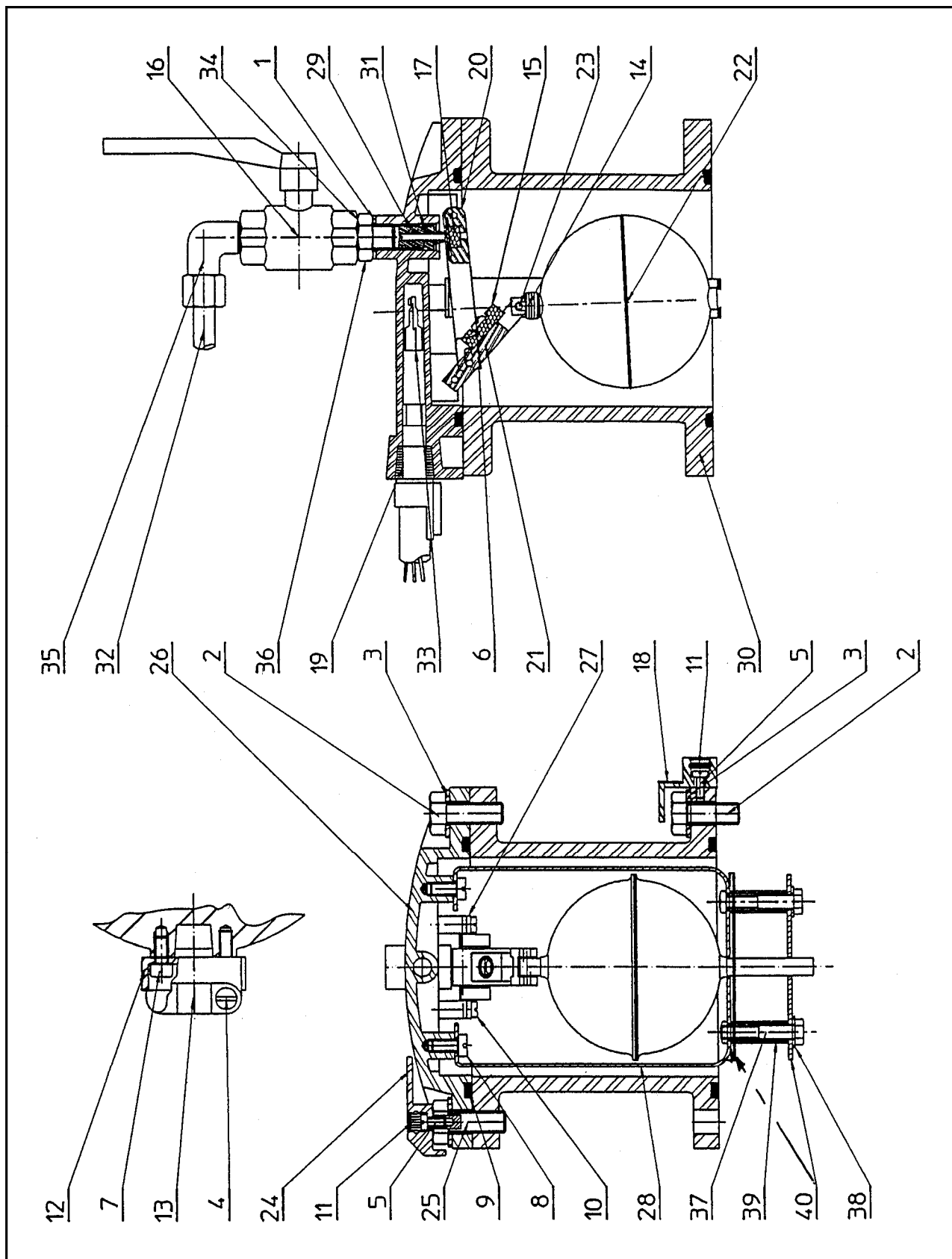
Rep	Qty	Reference	Description
1	1	27486	O'Ring
2	2	362052	Gudgeon bolt
3	1	363186	Lid
4	1	363945-11	Extension
5	1	436846	Filter basket 50 micron
6	1	438903-22	Upper level contact
7	1	513202	Finger of glove
8	1	516361-10	Pick up 1/2
9	1	516541	Drain plug 1"1/4 gaz
10	1	516542	Gasket BS 43-54
11	1	516796-30	Body
12	1	516890	Probe of temperature
13	6	900016-26	Screw H M12x40

SPARE PARTS LIST STRAINER AIR ELIMINATOR EC 39



Rep	REFERENCE	Qté	DESIGNATION
1	438109	1	Body
2	363910	1	Lid
3	438903	1	Upper level contact
4	504764	1	O'Ring 393,07x 6,99
5	363912	12	Gudgeon bolt M12-50/30
6	362053	12	Cross's nuts
7	995903	1	Drain plug GF290-1/2
	438110	1	Filtering basket of de 450 µ
	438111	1	Filtering basket of de 200 µ
	438113	1	Filtering basket of de 50 µ

SPARE PARTS LIST ELECTRICAL AIR SEPARATOR HEAD



SPARE PARTS LIST ELECTRICAL AIR SEPARATOR HEAD

Rep	1 REFER2ENCE	Qté	DESIGNATION
	438903		Air eliminator head with
1	363189	1	Gasket Ø12x17x1
2	20069	11	Screw THM 10 Lg 25
3	26776	12	washer Ø 10,5x22x1,5
4	26848	2	Screw
5	26863	2	Screw TCBM 4 Lg 8
6	26988	1	Screw TCBM 4 Lg 10
7	27007	2	Screw TCc M6 Lg 12
8	27012	2	Screw TCc M6 Lg 12
9	27149	2	O'ring
10	27182	4	Screw TCB M4 Lg 8
11	903177-002	2	Lead seal
12	238607	1	Pressure cover
13	902600	1	Clamp
14	238594	1	Spring
15	353605	1	Magnet
16	503809	1	Spherical valve
17	356262	1	Gasket
18	364425	1	Housing for seal
19	361418	1	Pressure cover ring
20	361913	1	Gasket support
21	361914	1	Magnet support
22	362021-11	1	Floater
23	362023	1	Pin G02 Ø3 Lg 16
24	362601	1	Housing for seal
25	362603	1	Spécial Screw
26	363133-11	1	Support body
27	363134	2	Small plate
28	437633	1	Clip
29	363137	1	Valve housing clamp
30	363945-11	1	Extension
31	364469	1	O'ring
32	504247	1	Pipe
33	434130-13	1	Mounting reed switch encapsulated
34	363616	1	Gasket Ø14x20x2
35	438834	1	Elbow union
36	503461	1	Nipple
37	21077	2	Screw
38	26742	2	washer
39	365174	2	Spacer
40	365175	1	Reflector