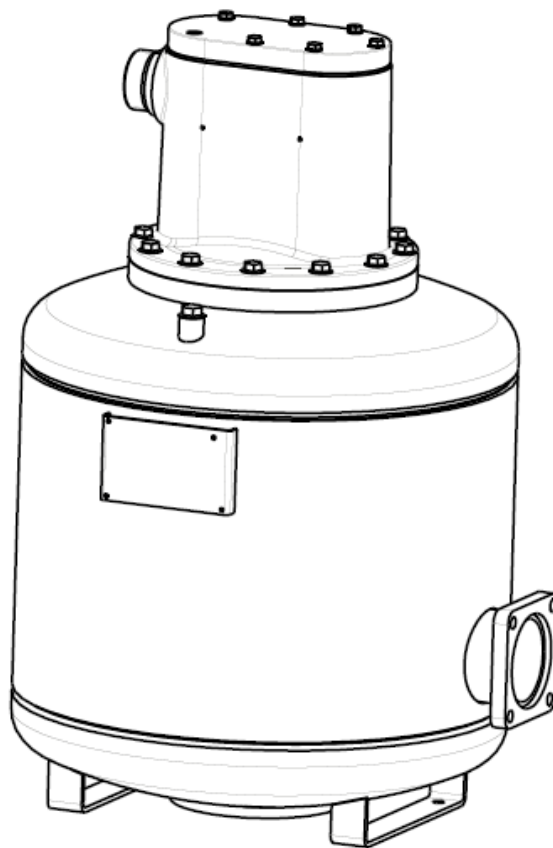


**PURGEUR OF GAS SATAM  
XAD 20-150  
User Manual  
SPARE PARTS LIST**

U516315-e – Revision 3 – 22 February 2013



This document consists of **8** pages, (including the flyleaf)

This document is the property of SATAM  
And can't be transmitted to someone also with out prior authorisation

SATAM may modify this document without prior notice

In conformity with the European directive 94/9/CE-ATEX

## PURGEUR OF GAS.HP. XAD 20-150

### SUMMARY

|  |        |
|--|--------|
| 1. RECEPTION.....  | 3      |
| 2. PRINCIPLE OF FUNCTIONING .....                          | 3      |
| 3. OBSTRUCTION PLAN .....                                  | 5      |
| 4. Organized.....  | 6      |
| 5. Starting.....   | 6      |
| 6. PERIODIC MAINTENANCE.....                               | 6      |
| 6.1. As a general rule .....                               | 6      |
| 6.2. At least quarterly checks (to make by the user) ..... | 6      |
| 6.3. Annual checks.....                                    | 6      |
| 6.4. <u>REMARK VERY IMPORTANT:</u> .....                   | 6      |
| 7 SPARE PARTS LIST .....                                   | 7 et 8 |

## GENERAL

This part contains the information necessary for the reception and for the functioning of the purgeur of gas of type XAD 20-150.

### 1. Reception

The meters are packed in cardboard packing designed for and adapted to protect the meters during transport.

However if, on arrival, the packaging appears to have been damaged, the customer should notify the carrier of the damage and inform SATAM.

### 2. Principle of functioning

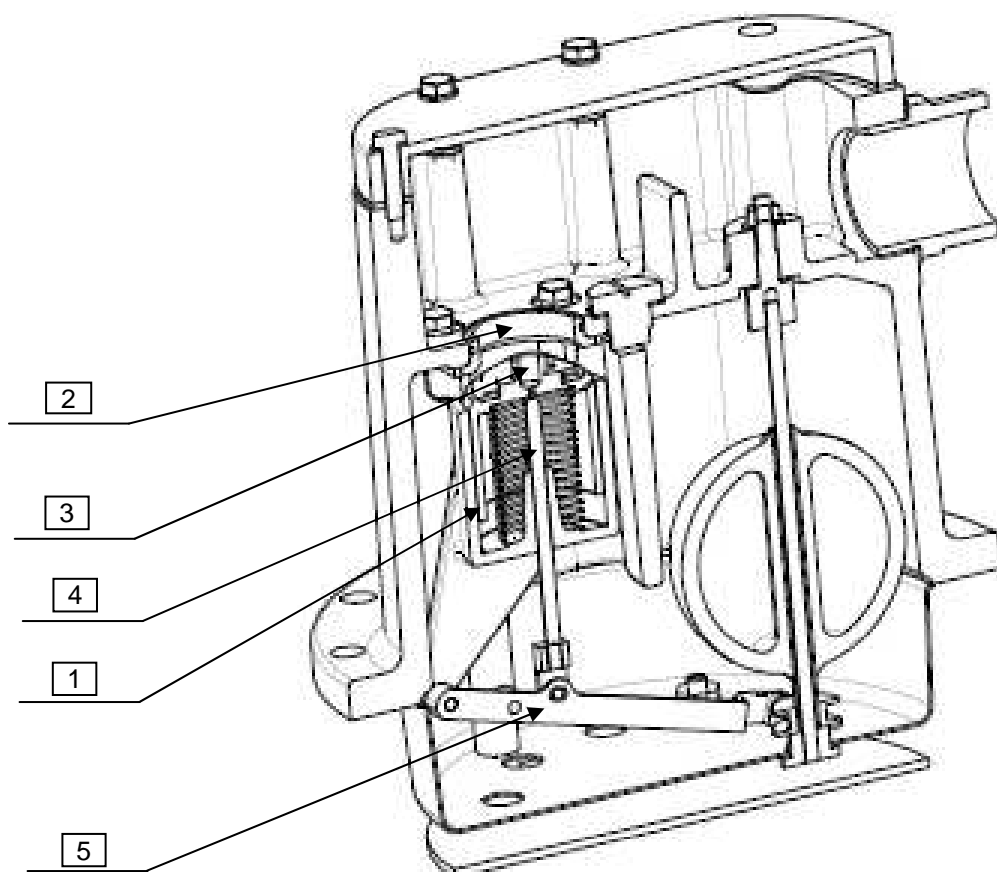
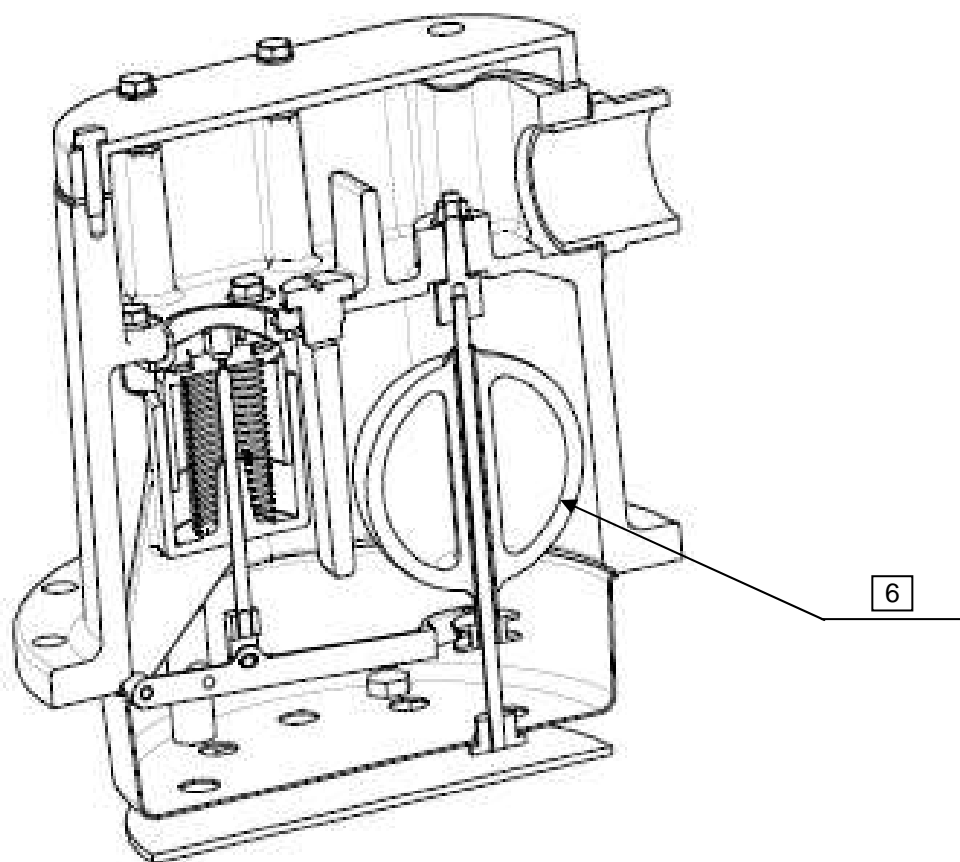
The head of purgeur of gas maybe gone up on a body of purgeur or on a microfiltre-separator.

The liquid manages in the body to purgeur or of the microfiltre-separator by the pipe of entrance. During its climb, he hunts gases which escape by the opening ( 2 ) then lift the ballcock ( 6 ) entailing the closure of the opening ( 3 ) by the pointeau ( 4 ) and the opening ( 2 ) by the piston ( 1 ). In these conditions all the installation is under pressure and we can proceed to the distribution.

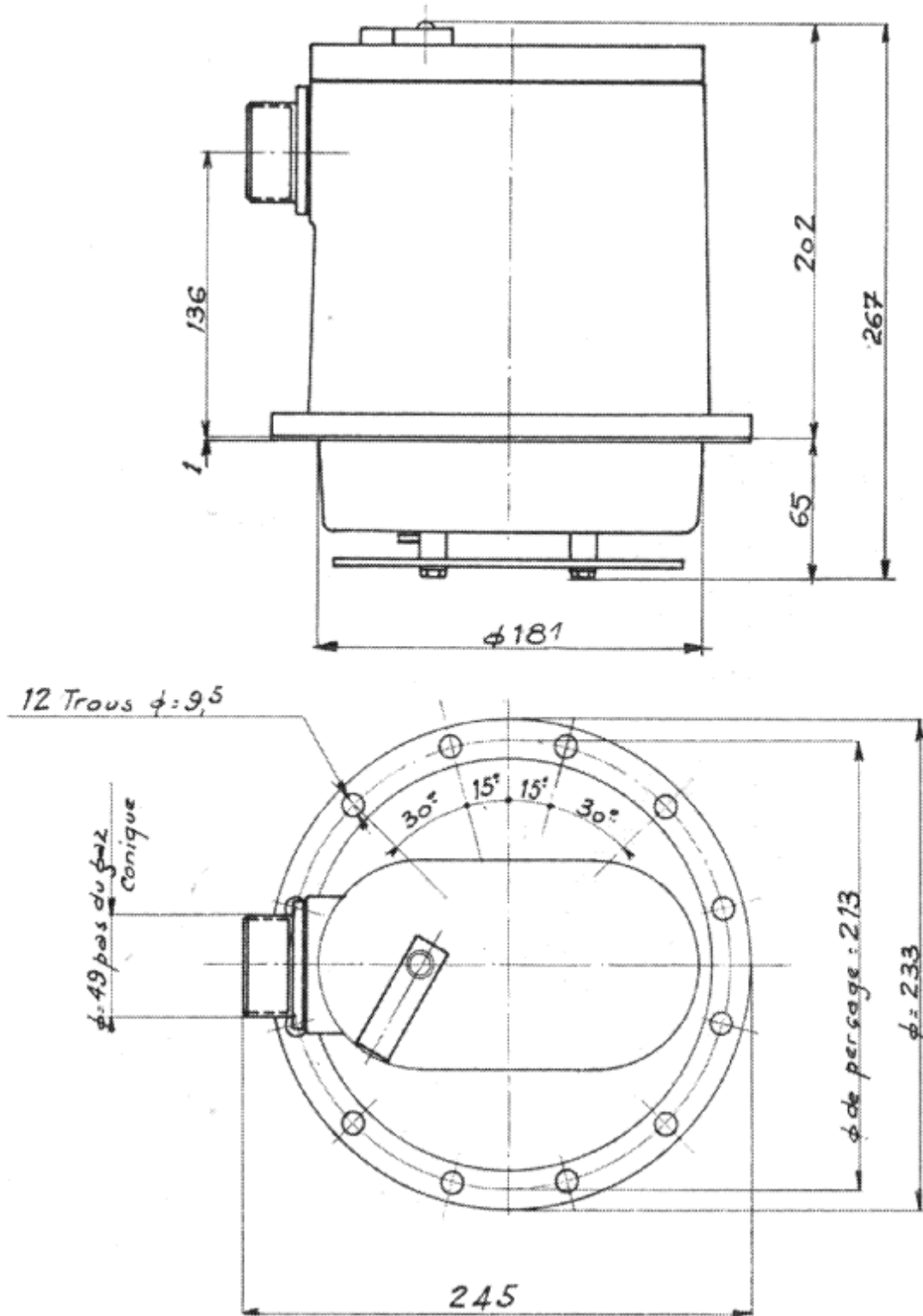
If there is a shortage of stock, the accelerating pump sends of the air and gases to the purgeur or the microfiltre-separator, the level of the liquid comes down in the body of purgeur or of the microfiltre-separator and the ballcock acting on the united control lever ( 5 ) of the lid ( 4 ) loosens the opening (3) what provokes the opening of the piston ( 1 ). Gases can then escape by the tube of stake in the atmosphere which must be stiff or not pinçable.

#### **Recommendations**

**It is indispensable to plan a lid anti-return**



## 3. Obstruction plan



## 4. Organized

Typical purgeurs SATAM XAD 20/150 are installed after the pump.  
The stake in the atmosphere must be linked with the stiff tube or not pinçable on a compartment.

## 5. Starting

When all the hydraulic and electric connections are ended, we can proceed to the starting of the group of counting.

So that a starting takes place in good conditions, it is above all necessary:

- Of the clean product, being notably exempt from metal particles.
- That the channeling are washed, rinsed and exempt from water.

## 6. Periodic maintenance

### 6.1. As a general rule

Periodic maintenance is required at least once a year.  
Service operations must be carried out by a Company approved by Weights & Measures.

### 6.2. At least quarterly checks (to make by the user)

Two checks at least quarterly:

- Vérifier To verify the state of connectings, no leak has to take place.
- Verify the state of the filtering basket gone up upstream to the purgeur or make sure that the filtering elements of the microfiltre-separator are not sealed.

### 6.3. Annual checks

Vérification des pièces suivantes :

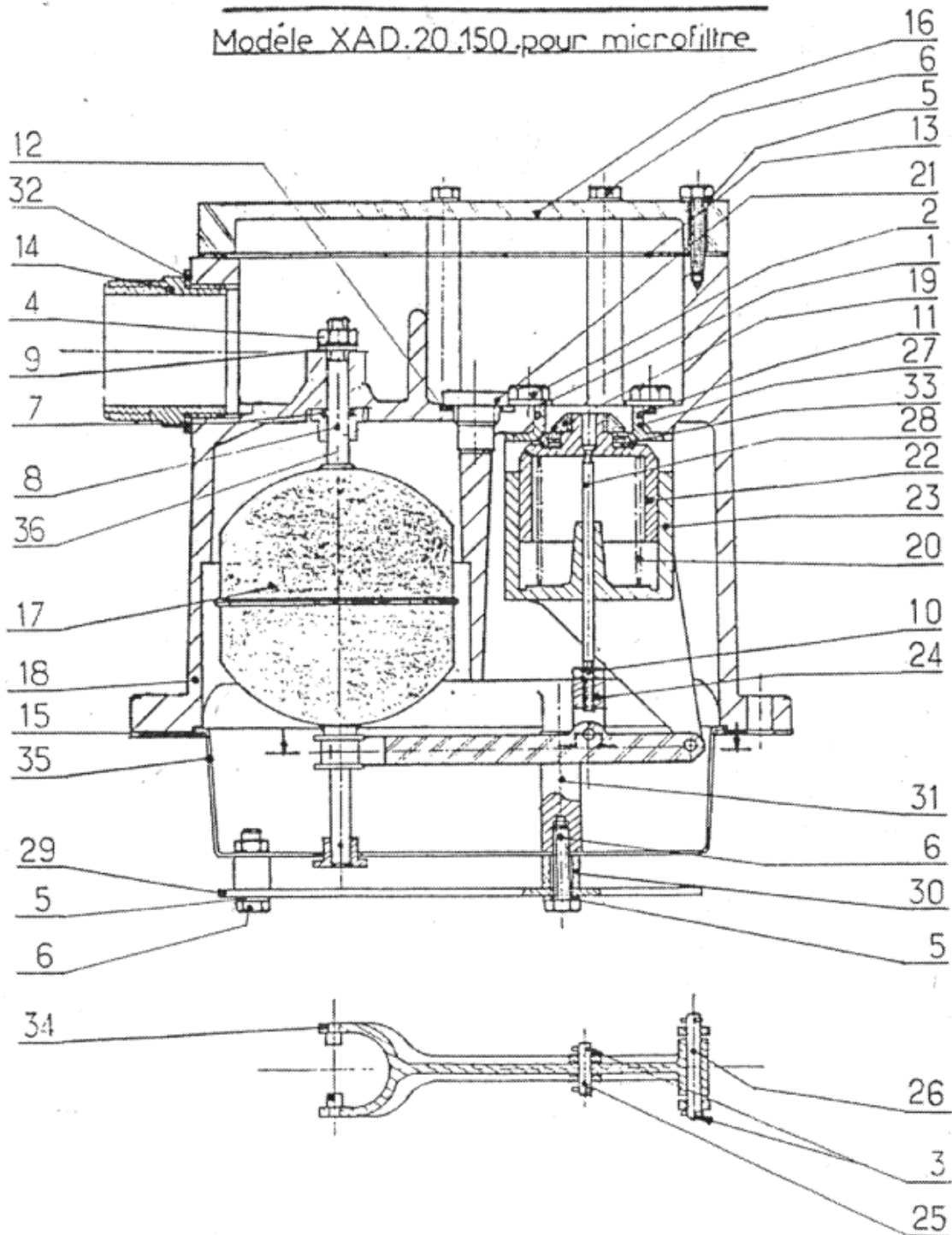
- Ring BS n°27310,
- Gasket T n°27271,
- Flat joint n°100007,
- Sit of the piston n°360254,
- Punch n°360255,
- Gasket n°435300.

### 6.4. REMARK VERY IMPORTANT:

**We strongly advise against the use of a high pressure water jet to clean the measuring unit, as this could seriously damage the metering unit.**

## TETE DE PURGEUR.H.P.

Modèle XAD.20.150.pour microfiltre



## HEAD OF DRAINER .HP. XAD 20.150

| Rep | REFERENCE | Qté | DESIGNATION   |
|-----|-----------|-----|---|
| 1   | 5425      | 4   | Gasket (Métalloplastique 6/10/2)                      |
| 2   | 900015-0  | 4   | Screw (Zn)  |
| 3   | 20110     | 4   | Pin (Steel 6-16)                                      |
| 4   | 20400     | 1   | NutH M 6 (Steel C 8.8), in the kit 515254             |
| 5   | 20502     | 10  | Washer Ø 6x12x1,2 (Zingué steel)                      |
| 6   | 21075     | 10  | Screw H M6 (Steel)                                    |
| 7   | 27310     | 1   | Ring BS Ø 8.6 – 13-1, in the kit 515254               |
| 9   | 26742     | 1   | Washer Ø 6,5x14x0,8 (Zingué steel), in the kit 515254 |
| 10  | 26841     | 1   | Nut H M5 (Steel)                                      |
| 11  | 27271     | 1   | Gasket T Ø 37,82x1,78 (Viton)                         |
| 12  | 100007    | 1   | Flat joint Ø 16x22x1 (Red fiber)                      |
| 13  | 236981    | 1   | Joint of the hat (Tensit BAU), in the kit 515254      |
| 14  | 237791    | 1   | Sleeve (Sweet steel, cadmié, bichromaté)              |
| 15  | 353609    | 1   | Flat joint (Blue Gard 3400), in the kit 515254        |
| 16  | 356493    | 1   | Cover (AS 10 G)                                       |
| 17  | 362021-21 | 1   | Float (Divinycell H), in the kit 515254               |
| 18  | 359081    | 1   | Body (Cast iron 400-15)                               |
| 19  | 359085    | 1   | Nut (Sweet cadmié steel)                              |
| 20  | 359437    | 1   | Spring (Stainless steel)                              |
| 21  | 360244    | 1   | Plug (Stainless steel)                                |
| 22  | 360245    | 1   | Piston (Stainless steel Z 10 C NF)                    |
| 23  | 360246    | 1   | Sit of valve (Bronze UE 12 (kanigen))                 |
| 24  | 360247    | 1   | Fork-joint of punch (Stainless steel NSU)             |
| 25  | 360248    | 1   | Center punch (Stainless steel NSU)                    |
| 26  | 360249    | 1   | Axle (Stainless steel NSU)                            |
| 27  | 360254    | 1   | Sit of the piston (Steel X 13 M)                      |
| 28  | 360255    | 1   | Punch (Stainless steel NSU)                           |
| 29  | 360348    | 1   | Deflector (Stainless steel Z8 C 17 )                  |
| 30  | 360349    | 4   | Spacer (Sweet cadmié steel)                           |
| 31  | 360352    | 2   | Post (Sweet stretched steel hexagonal E24)            |
| 32  | 363248    | 1   | Gasket (Blue Gard 3400)                               |
| 33  | 435300    | 1   | Armed set of table linen (Viton)                      |
| 34  | 142743-11 | 1   | Arm of the float                                      |
| 35  | 436196    | 1   | Cap welded (Stainless steel 304L)                     |
| 36  | 515254    | 1   | Complete kit  |