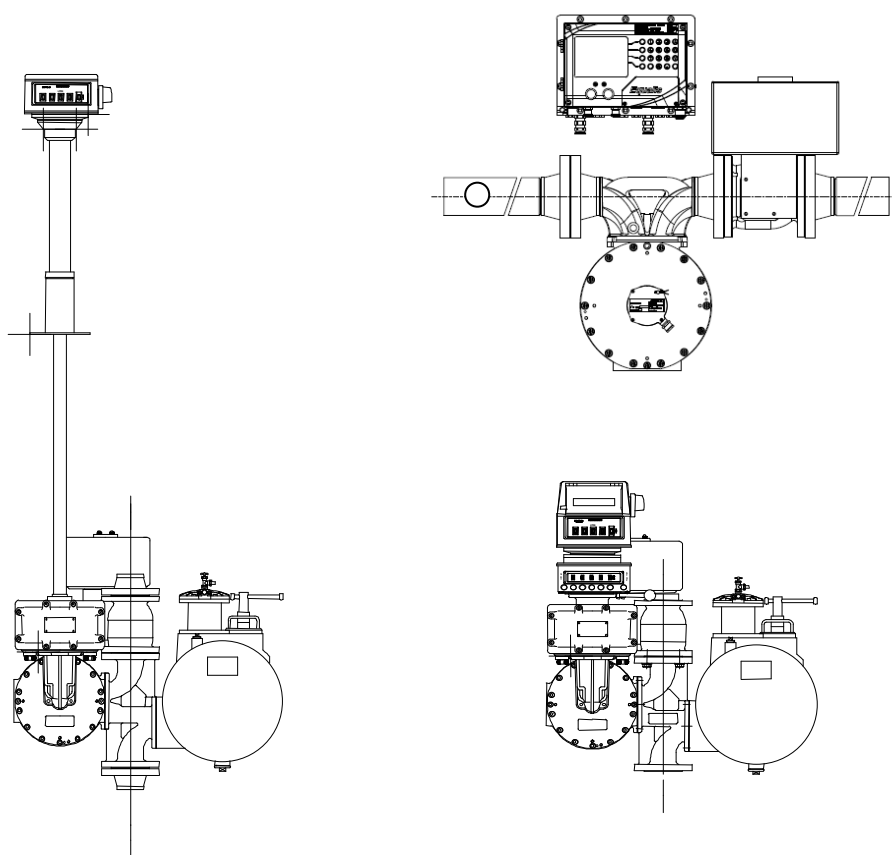


**BULK METERING UNIT
ZCE 5-24 – ZCE 5-48
ZCE 5-80 – ZCE 5-150
SPARE PARTS LIST**

U508191-e – Révision 6 – 05 February 2010



This document consists of **59** pages, (including the flyleaf)

This document is the property of SATAM

And can't be transmitted to someone also with out prior authorisation

SATAM may modify this document without prior notice

In conformity with the European directive 94/9/CE-ATEX and 97/23/CE - PED

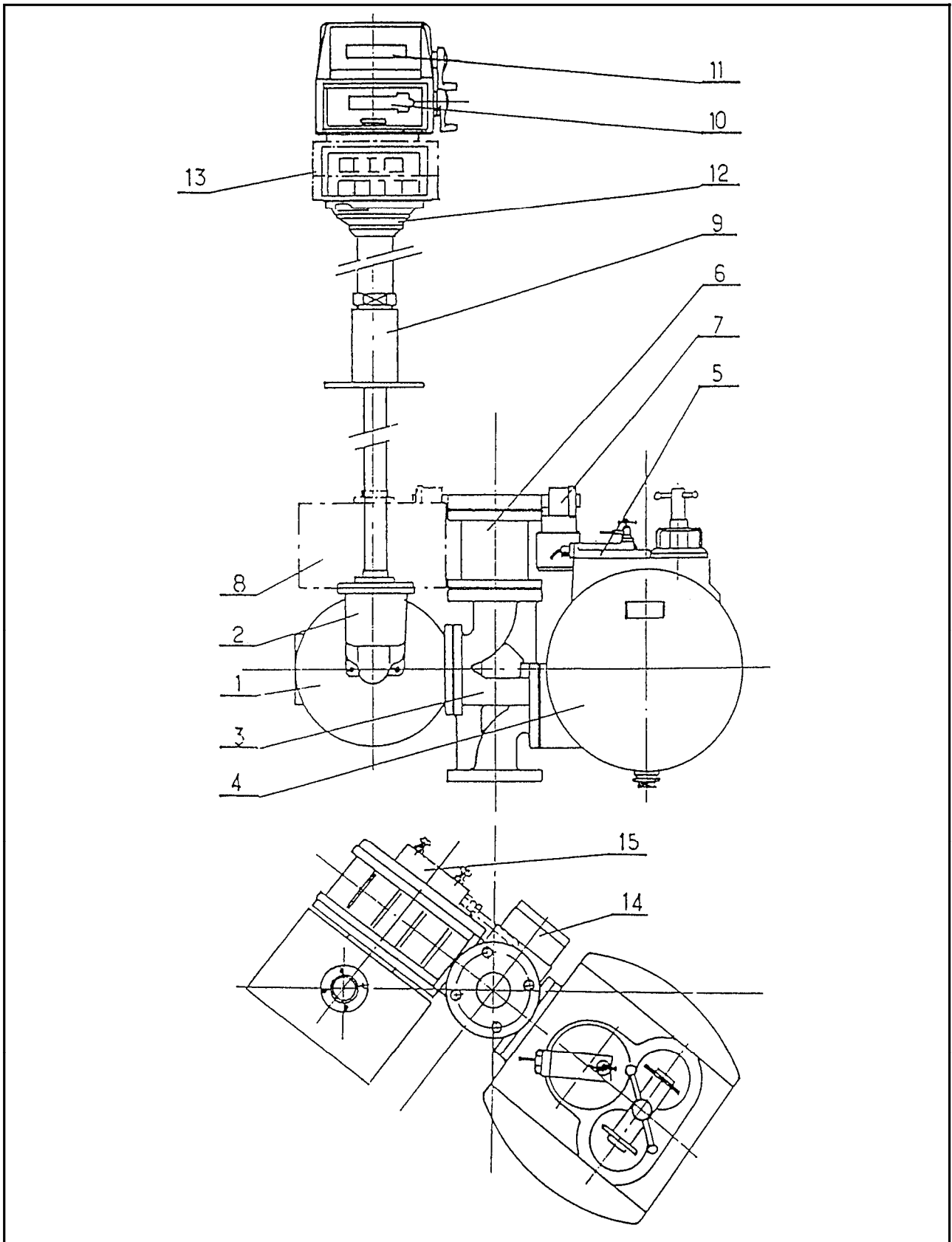
Summary

VERTICAL METERING UNIT ZCE5 E80.....	4
VERTICAL METERING UNIT ZCE5 E150.....	5
VERTICAL METERING UNIT ZCE 5	6
MANIFOLD CAST STEEL ZCE 5-80.....	7-8
MANIFOLD CAST STEEL ZCE 5 -150.....	9-10
FILTER AIR TRAP EC 29 - 80.....	11-12
FILTER AIR TRAP EC 29 - 150.....	13-14
AIR ELIMINATOR HEAD AUTOMATIC CLOSURE.....	15-16
MEASURING CHAMBER MA 21-24	17-18
MEASURING CHAMBER MA 21-48	19-20
MEASURING CHAMBER MA 21-80/80 INVERTED RIGHT HAND INLET	21-22
MEASURING CHAMBER MA 21-80/80 INVERTED RIGHT HAND INLET WITH INTAKE LOODING.....	23-24
MEASURING CHAMBER MA 21-80/150 INVERTED RIGHT HAND INLET WITH INTAKE LOODING.....	25-26
MICRO ADJUSTEMENT AB 21.....	27-28-29
INSTANTANEOUS FLOW METER-ADAPTATION	30-31
DIFFERENTIAL STOP – VALVE DE 3" WITH ONE ELECTRO - PILOTE ...	32-33
DIFFERENTIAL STOP – VALVE DE 4" WITH ONE ELECTRO - PILOTE ...	34-35
ELECTROPILOT VALVE.....	36-37
STOP VALVE XAD 37 – DN 80 (3'')	38-39
STOP VALVE XAD 37 ELECTRO-MECHANICALY CONTROLLED	40-41-42
ADJUSTABLE STOP VALVE XAD 36 – DN 100 (4'').....	43-44
STOP VALVE XAD 36 ELECTRO-MECHANICALY CONTROLLED	45-46-47

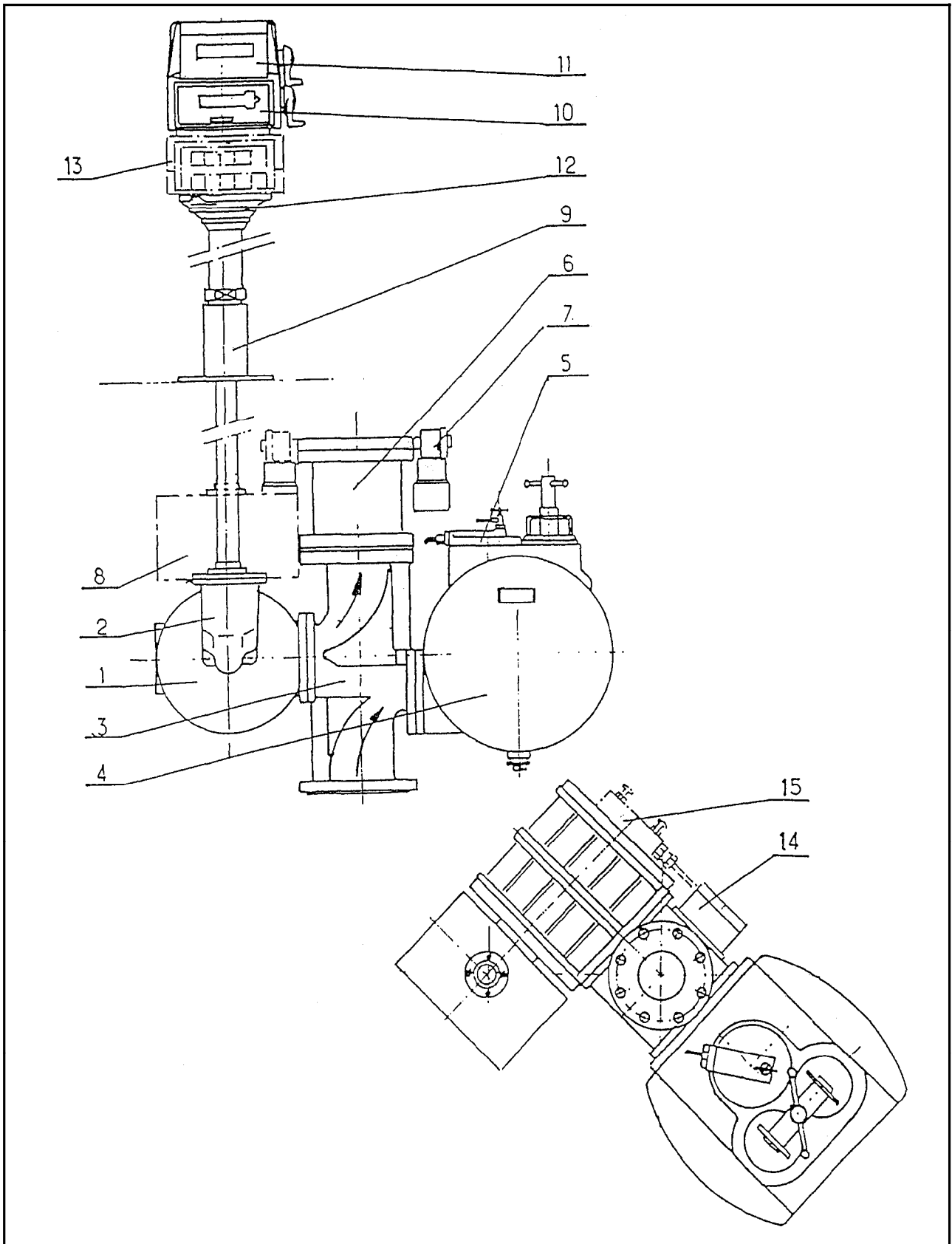
SATAM

ELECTRICAL JUNCTION BOX AC - 7.....	48-49
ADJUSTABLE EXTENDED DRIVE XAB - 28.....	50-51
SWIVEL XAB.2 (ZCE 5-80)	52-53
SWIVEL XAB.2 (ZCE 5-150)	54-55
SWIVEL XAB.2 ADJUSTMENT FOR VR 7889 RESET COUNTER.....	56-57
MICRO-SWITCH ANTI-FRAUDE DEVICE ON TICKET PRINTER MODELS VR 7498 AND 7951	58-59

VERTICAL METERING UNIT ZCE5 E80



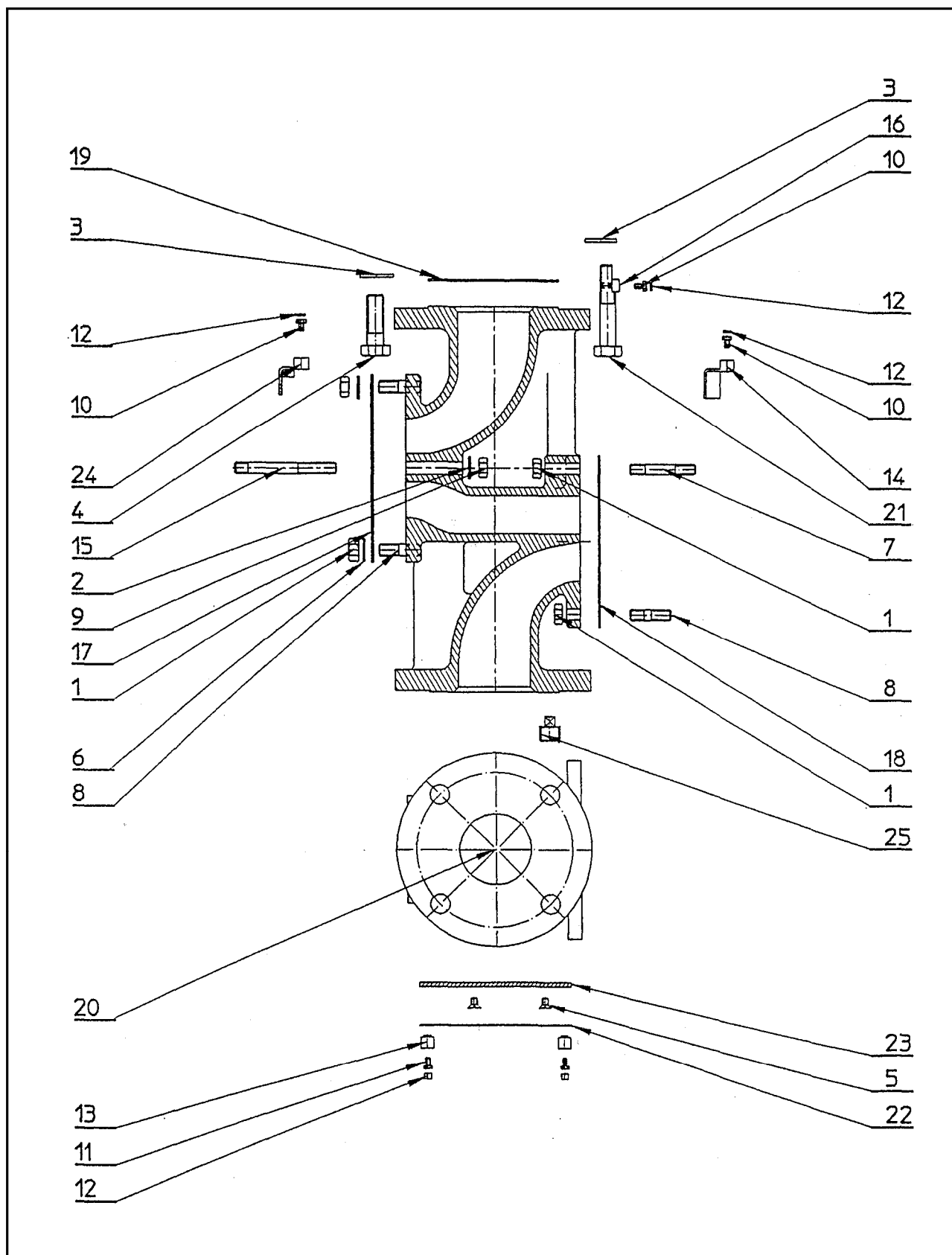
VERTICAL METERING UNIT ZCE5 E150



VERTICAL METERING UNIT ZCE 5

Rep	DESCRIPTION
1	Measuring chamber MA 21-80 ou Measuring chamber MA 21-150
2	Micro adjustment
3	Central mamfold
4	Filter-air detector EC 29.80 ou EC 29.150
5	Air eliminator head
6	Differential stop valve
7	Electropilot valve
8	Electric junction box
9	Adjustable extended drive
10	Register
11	Ticket printer
12	Swivel
13	Preset mechanism
14	Electric junction box (ADF)
15	Additive injection mechanism

MANIFOLD CAST STEEL ZCE 5-80

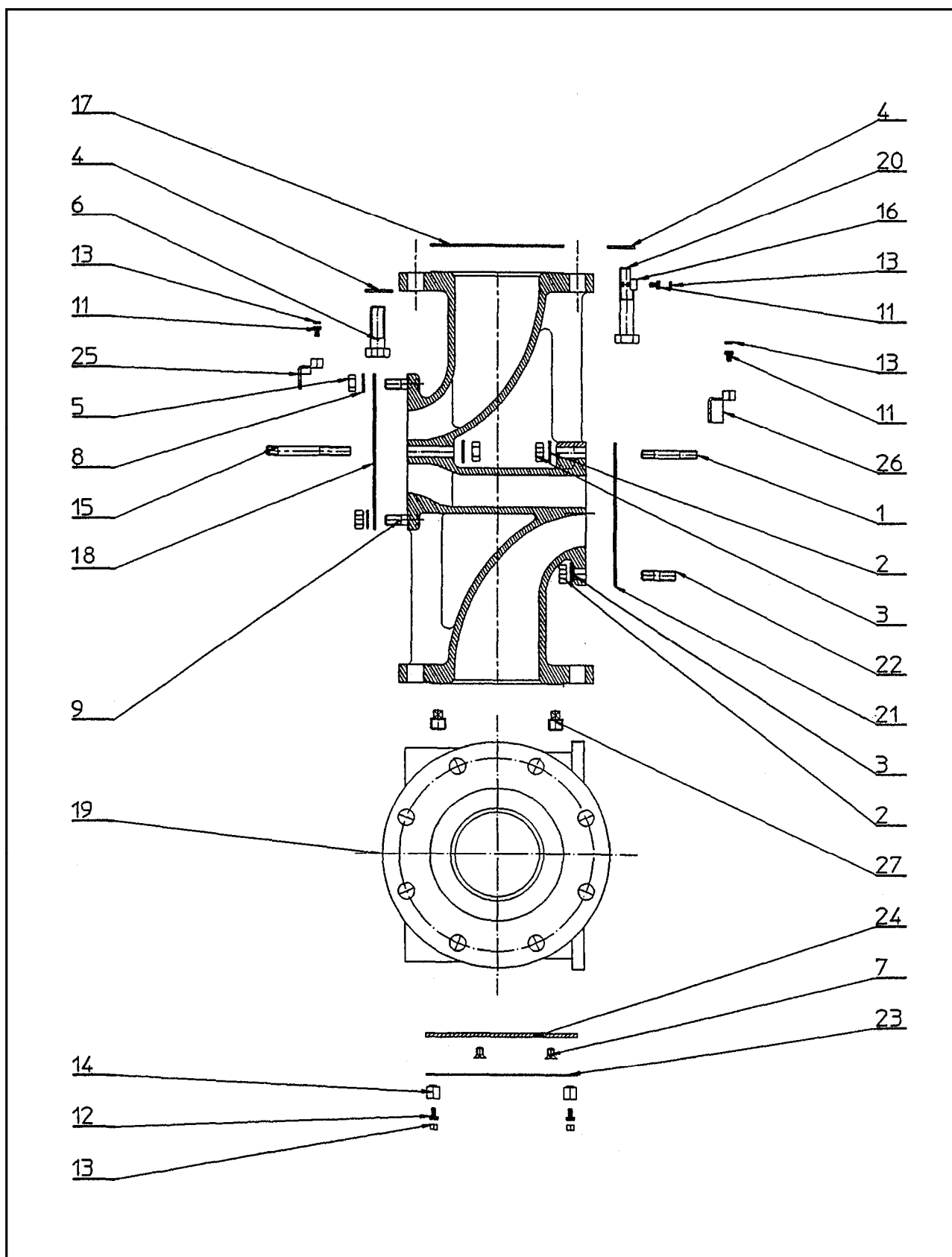


U507972 1/2 Révision 0

MANIFOLD CAST STEEL ZCE 5-80

Rep	REFERENCE	Qty	DESCRIPTION
1	20417	12	Nut M10
2	20506	1	Washer Ø 12
3	20524	4	Washer Ø 16
4	21169	3	Screw M16 Lg 50
5	21511	2	Screw M6 Lg 10
6	25039	4	Washer Ø 10
7	25171	1	Stud M10 15x30x20
8	25337	11	Stud M10 15x5x20
9	26525	1	Nut M11 150
10	26857	3	Screw M5 Lg 8
11	26863	2	Screw M4 Lg 8
12	903177-002	5	Lead seal
13	901276	2	Housing for seal
14	357651	2	Housing for seal
15	230035	1	Stud M11 150
16	234858	1	Housing for seal
17	517248	1	Gasket
18	354619	1	Gasket
19	354926	2	Gasket
20	355309	1	Manifold
21	357999	1	Screw for seal
22	356560	1	Identification plate
23	357041	1	Support plate
24	357062	1	Housing for seal

MANIFOLD CAST STEEL ZCE 5 -150

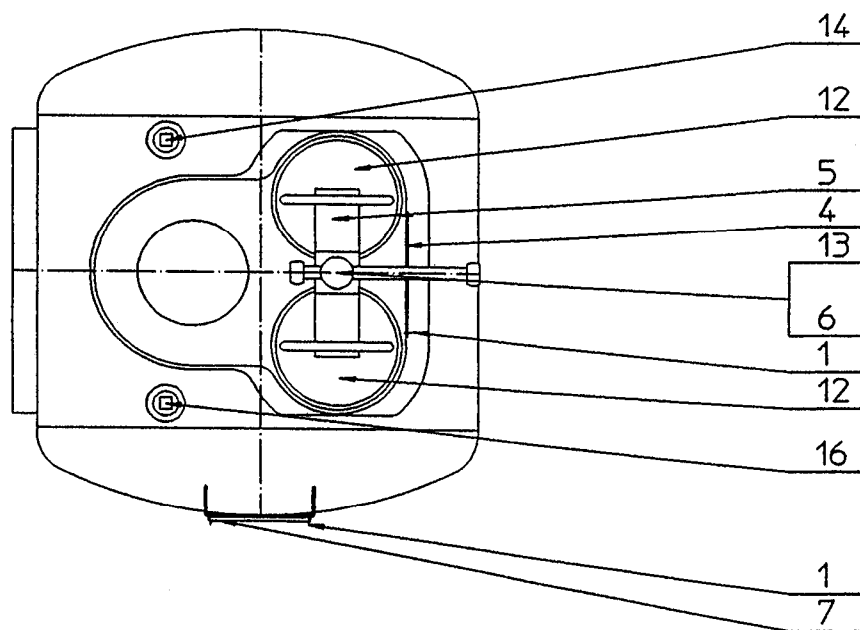
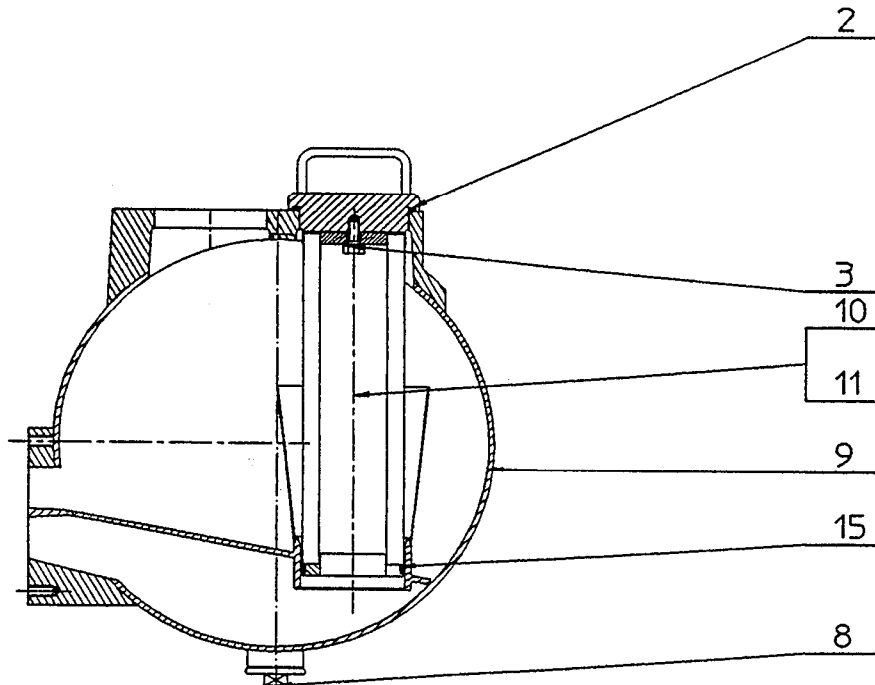


U507975 1/2 Révision 1

MANIFOLD CAST STEEL ZCE 5 -150

Rep	REFERENCE	Qty	DESCRIPTION
1	10410	1	Stud M12
2	20402	10	Nut M12
3	20506	2	Washer Ø 12
	26716	10	Washer Ø12
4	20524	8	Washer Ø 16
5	20417	8	Nut M10
6	21947	7	Screw M16 Lg 50
7	21511	2	Screw M6 Lg 10
8	25039	8	Washer Ø 10
9	25337	8	Stud M10 15x5x20
10	26525	2	Nut M11 150
11	26857	3	Screw M5 Lg 8
12	26863	2	Screw M4 Lg 8
13	903177-002	5	Lead seal
14	901276	2	Housing for seal
15	230035	2	Stud M11 150
16	234858	1	Housing for seal
17	353606	1	Gasket
18	517248	2	Gasket
19	355311	1	Manifold
20	357999	1	Screw for seal
21	355778	1	Gasket
22	356158	9	Stud M12 18x12x15
23	356560	1	Identification plate
24	357041	1	Support plate
25	357062	1	Housing for seal
26	357651	1	Housing for seal
27	995902	1	Plug 3/8"
	360315	1	Plug D.14x150 RF 710N
	900450-003	1	Ring BS Ø14

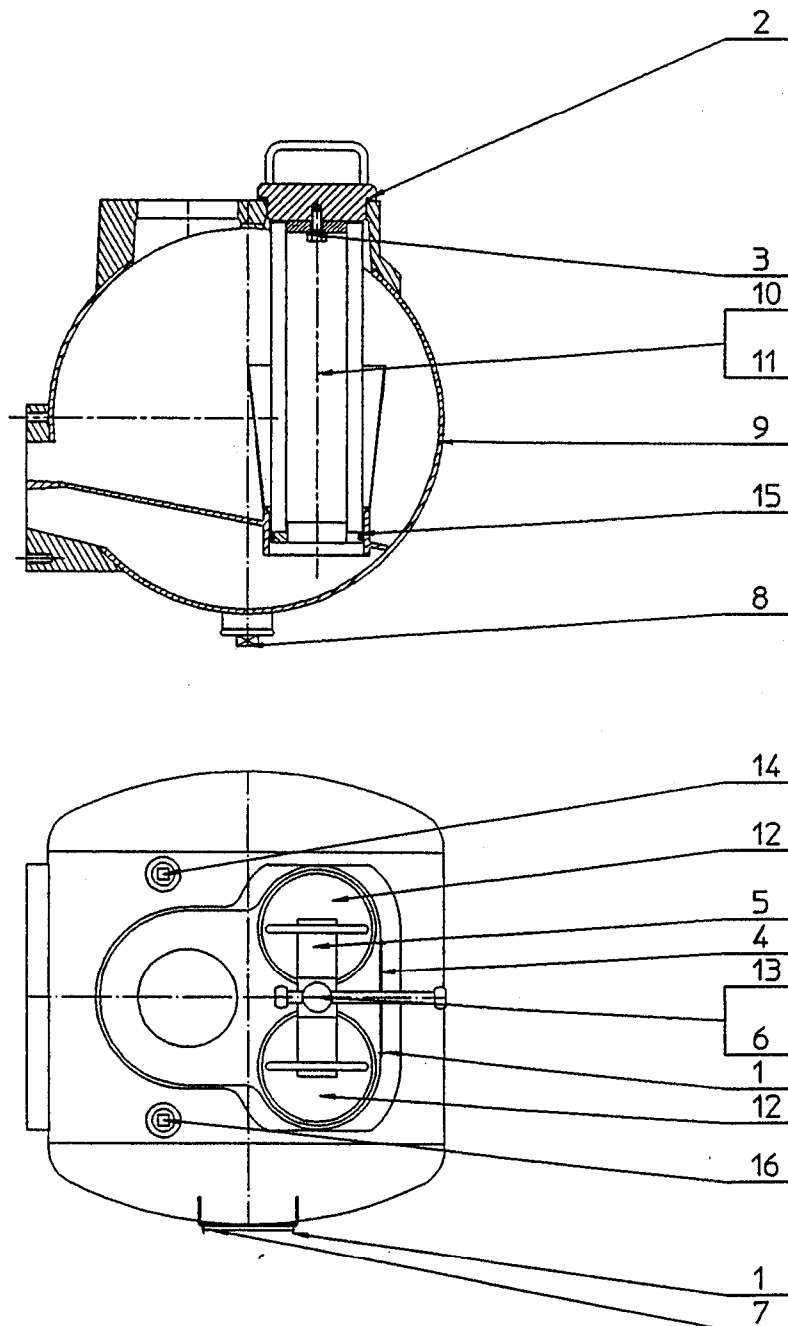
FILTER AIR TRAP EC 29 - 80



FILTER AIR TRAP EC 29 - 80

Rep	REFERENCE	Qty	DESCRIPTION
	434087		Filter air trap EC 29 - 80
1	9680	6	Rivet SIM N ⁴ Lg 4.8
2	364456	2	O'ring Ø 100,97x5,33
3	20051	2	Screw H M10 Lg 20
4	354718	1	Name plate
5	355308	1	Clamping device
6	355383	1	Stud M16 40x50x22
7	365038	1	Identification plate
	26863	1	Screw CB M4 – 8 AC
	901276	1	Housing for seal
	903177-002	1	Lead seal
8	358591	1	Drain plug 1"1/4 gaz
9	433766	1	Body
10	437732	2	Filter basket 200 micron
11	437733	2	Filter basket 50 micron
12	433934	2	Cover
13	434269	1	Tee bar clap nut
14	995902	1	Plug 3/8 gaz
15	27761	2	O'ring
16	995903	3	Plug 1/2 gaz

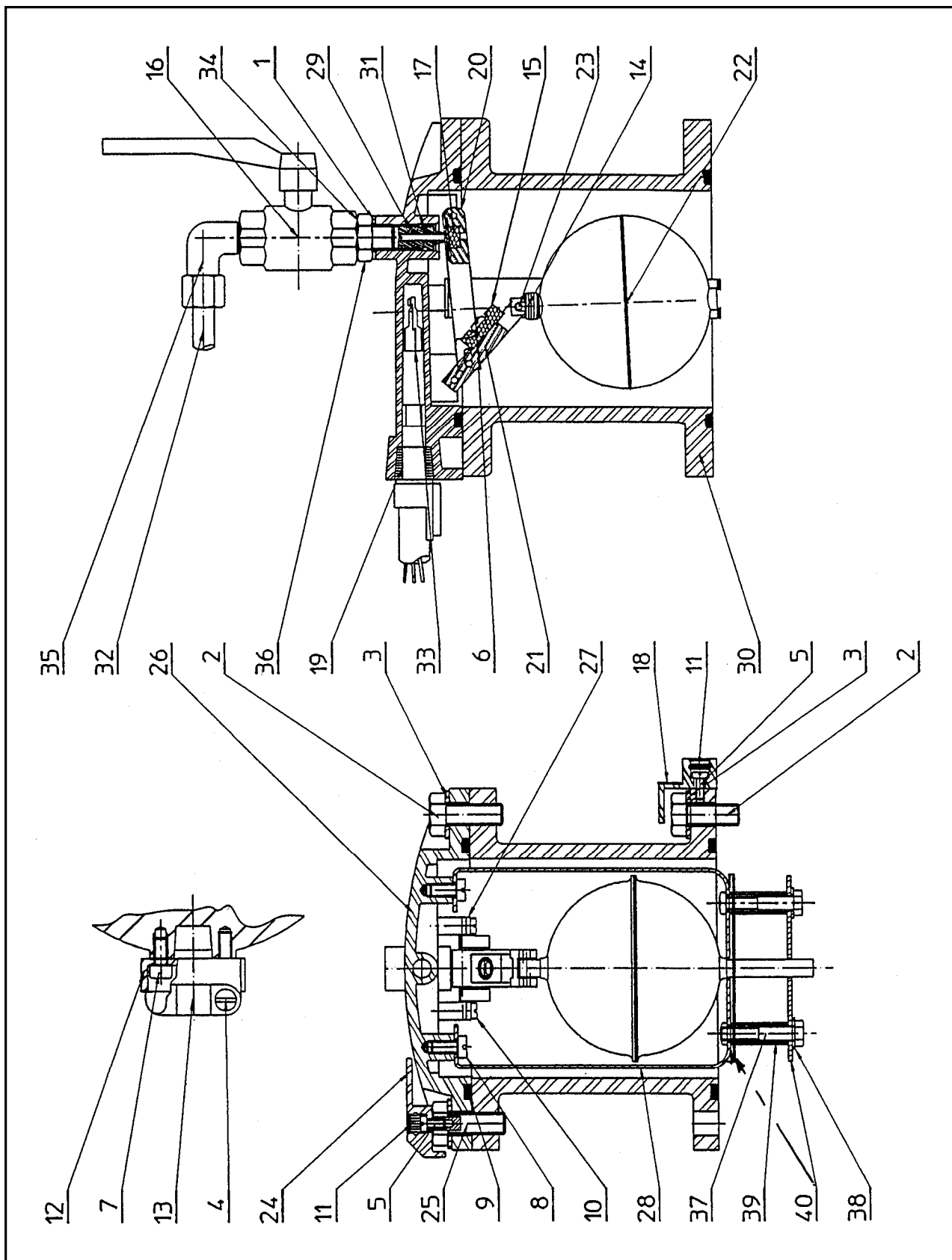
FILTER AIR TRAP EC 29 - 150



FILTER AIR TRAP EC 29 - 150

Rep	REFERENCE	Qty	DESCRIPTION
			Filter air trap EC 29 - 150
1	9680	6	Rivet SIM N°4 Lg 4.8
2	364456	2	O'ring Ø 100,97x5,33
3	20051	2	Screw H M10 Lg 20
4	354718	1	Name plate
5	355308	1	Clamping device
6	355383	1	Stud M16 40x50x22
7	365038	1	Identification plate
	26863	1	Screw CB M4 – 8 AC
	901276	1	Housing for seal
	903177-002	1	Lead seal
8	358591	1	Drain plug 1"1/4 gaz
9	433767	1	Body
10	437732	2	Filter basket 200 micron
11	437733	2	Filter basket 50 micron
12	433934	2	Cover
13	434269	1	Tee bar clap nut
14	995902	1	Plug 3/8 gaz
15	27761	2	O'ring
16	995903	3	Plug 1/2 gaz

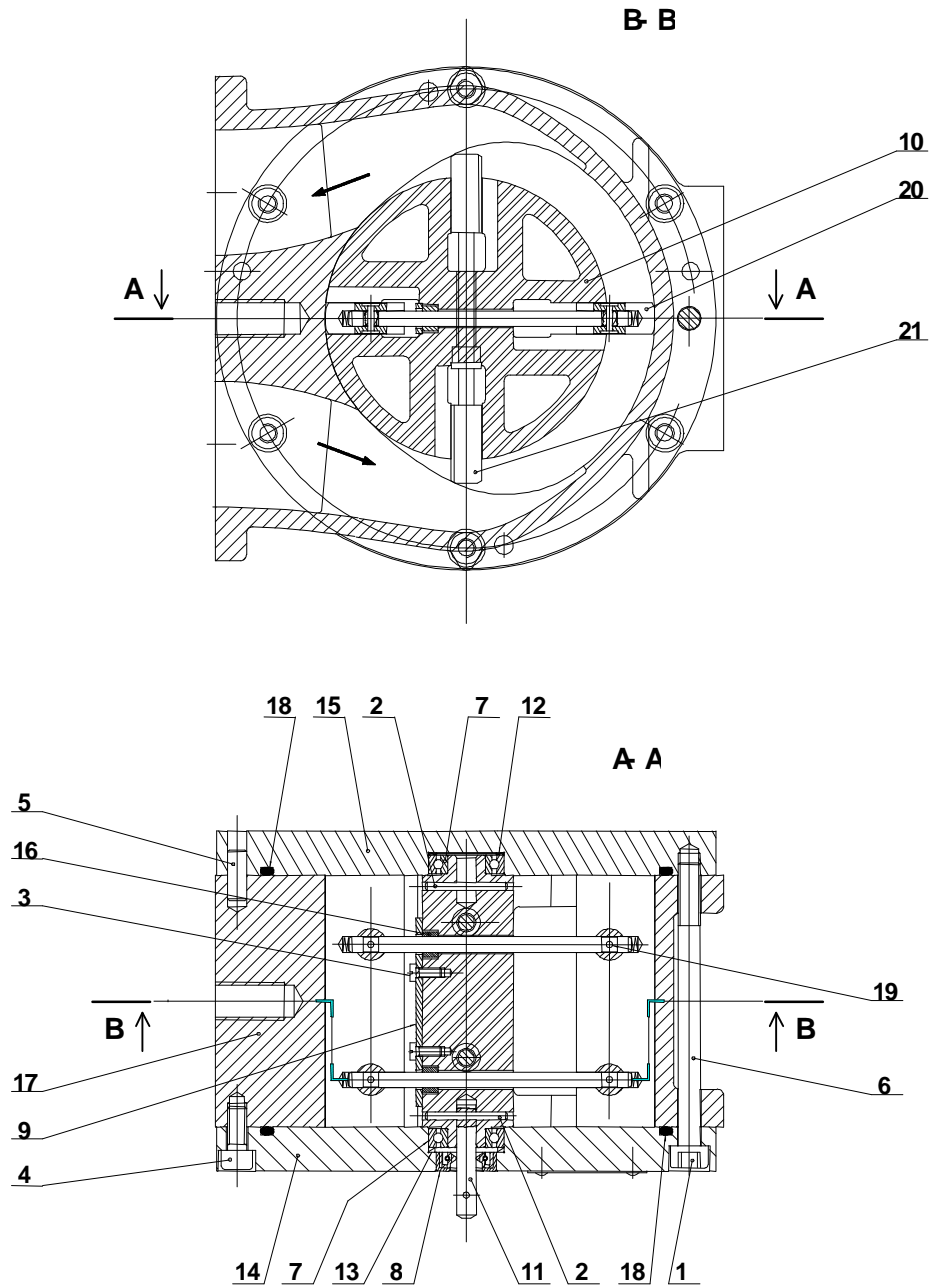
AIR ELIMINATOR HEAD AUTOMATIC CLOSURE



AIR ELIMINATOR HEAD AUTOMATIC CLOSURE

Rep	REFERENCE	Qty	DESCRIPTION
	438903		Air éliminator head with
1	363189	1	Gasket Ø12x17x1
2	20069	11	Screw THM 10 Lg 25
3	26776	12	washer Ø 10,5x22x1,5
4	26848	2	Screw
5	26863	2	Screw TCBM 4 Lg 8
6	26988	1	Screw TCBM 4 Lg 10
7	27007	2	Screw TCc M6 Lg 12
8	27012	2	Screw TCc M6 Lg 12
9	27149	2	O'ring
10	27182	4	Screw TCB M4 Lg 8
11	903177-002	2	Lead seal
12	238607	1	Pressure cover
13	902600	1	Clamp
14	238594	1	Spring
15	353605	1	Magnet
16	503809	1	Spherical valve
17	356262	1	Gasket
18	364425	1	Housing for seal
19	361418	1	Pressure cover ring
20	361913	1	Gasket support
21	361914	1	Magnet support
22	362021-11	1	Floater
23	362023	1	Pin G02 Ø3 Lg 16
24	362601	1	Housing for seal
25	362603	1	Spécial Screw
26	363133-11	1	Support body
27	363134	2	Small plate
28	437633	1	Clip
29	363137	1	Valve housing clamp
30	363945-11	1	Extension
31	364469	1	O'ring
32	504247	1	Pipe
33	434130-13	1	Mounting reed switch encapsulated
34	363616	1	Gasket Ø14x20x2
35	438834	1	Elbow union
36	503461	1	Nipple
37	21077	2	Screw
38	26742	2	washer
39	365174	2	Spacer
40	365175	1	Reflector

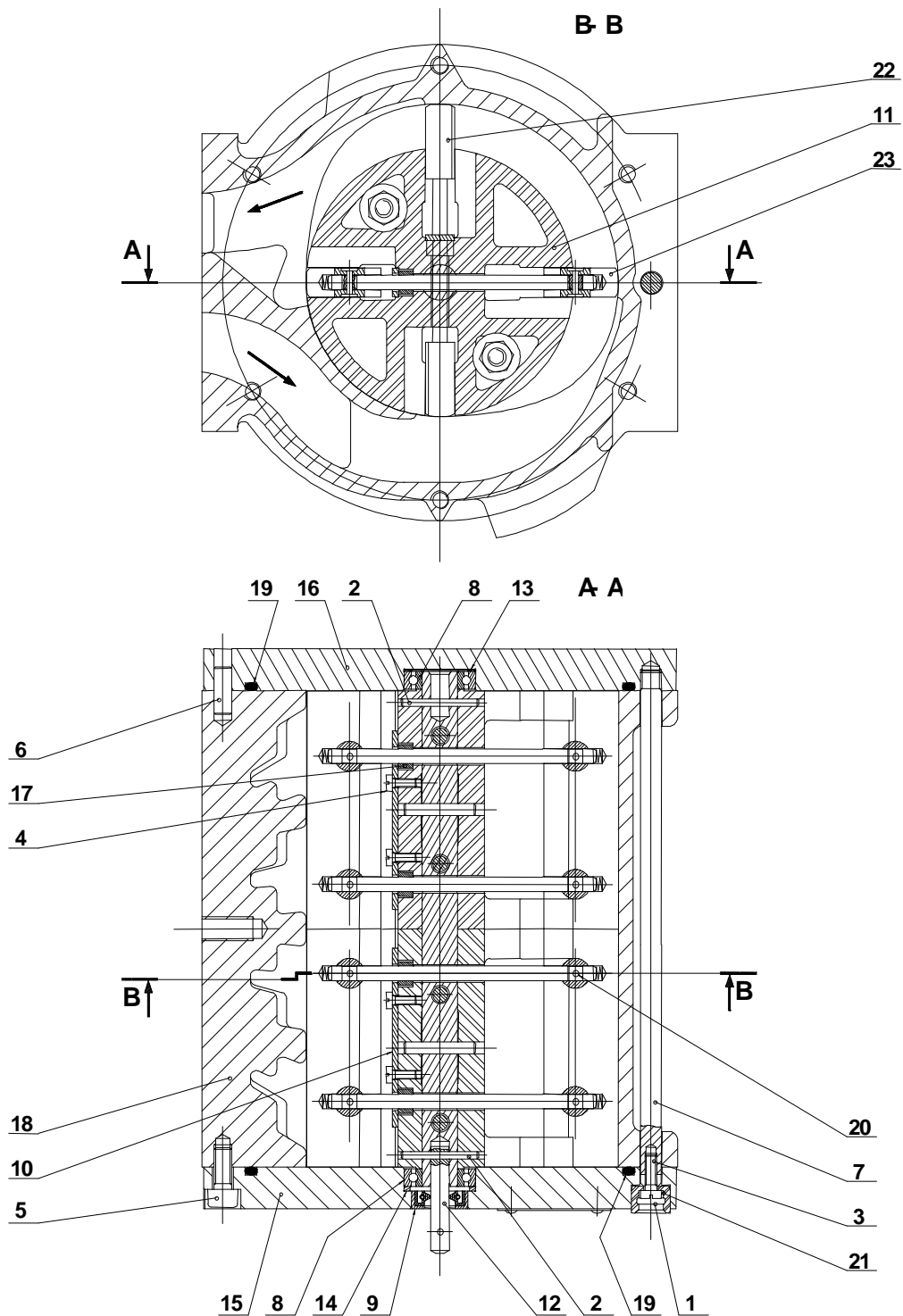
MEASURING CHAMBER MA 21-24/24



MEASURING CHAMBER MA 21-24

Rep	REFERENCE	Qty	DESCRIPTION
	435169 435169-20		MA 21-24 Measuring chamber left hand inlet MA 21-24 Measuring chamber left hand inlet 'great cold application'
	435170 435170-20		MA 21-24 Measuring chamber right hand inlet MA 21-24 Measuring chamber right hand inlet 'great cold application'
1	903177-002	1	Lead seal
2	27035	2	Pin G01 Ø 2,5 Lgr 26
3	27036	4	Screw CB M3x8
4	26480	12	Screw CHc M6x14
5	27725	4	Pin Ø 6 Lgr 16
6	230113	1	Screw
7	354391	2	Ball bearing
	516023		Ball bearing (great cold option)
8	356660	1	Gasket
	516012	1	Gasket (great cold option)
9	356756	2	Small plate
10	357487	1	Rotor
11	357724	1	Axle
12	357726	2	Washer
13	357807 to 357815 515649 – 515650	1	Wedge
14	358595	1	Front cover
15	358596	1	Back cover
16	358890	4	Ring
17	359633	1	Body
18	364499	2	O'Ring
	364499-20		O'Ring (great cold option)
19	364858	8	Rivet
20	435413	1	Set Left Blade
21	435414	1	Set Right Blade

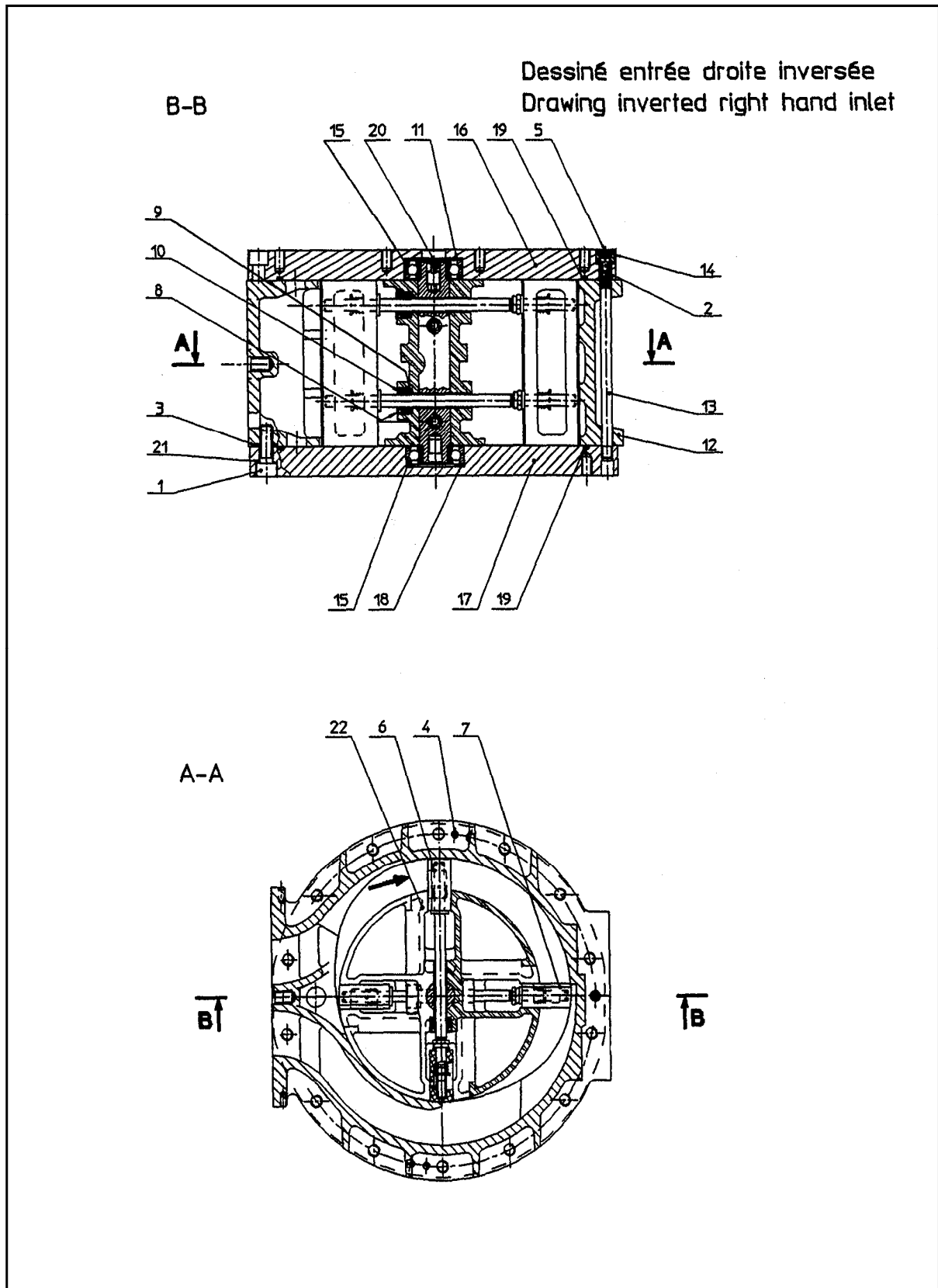
MEASURING CHAMBER MA 21-48



MEASURING CHAMBER MA 21-48

Rep	REFERENCE	Qty	DESCRIPTION
	437050 437050-20		MA 21-48 Measuring chamber left hand inlet MA 21-48 Measuring chamber left hand inlet 'great cold application'
	437051 437051-20		MA 21-48 Measuring chamber right hand inlet MA 21-48 Measuring chamber right hand inlet 'great cold application'
1	903177-002	1	Lead seal
2	27035	2	Pin G01 Ø 2,5 Lgr 26
3	26961	1	Screw CB M4x12
4	27036	8	Screw CB M3x8
5	26480	12	Screw CHc M6x14
6	27725	4	Pin Ø 6 Lgr 16
7	360897	1	Gudgeon bolt
8	354391	2	Ball bearing
	516023		Ball bearing (great cold option)
9	356660	1	Gasket
	516012		Gasket (great cold option)
10	356756	4	Small plate
11	436438	1	Rotor
12	357724	1	Axle
13	357726	2	Washer
14	357807 à 357815 515649 à 515650	1	Wedge
15	358595	1	Front cover
16	358596	1	Back cover
17	358890	8	Ring
18	362194	1	Body
19	364499	2	O'Ring
	364499-20		O'Ring (great cold option)
20	364858	16	Rivet
21	361785	1	Pellet
22	435413	2	Set Left Blade
23	435414	2	Set Right Blade

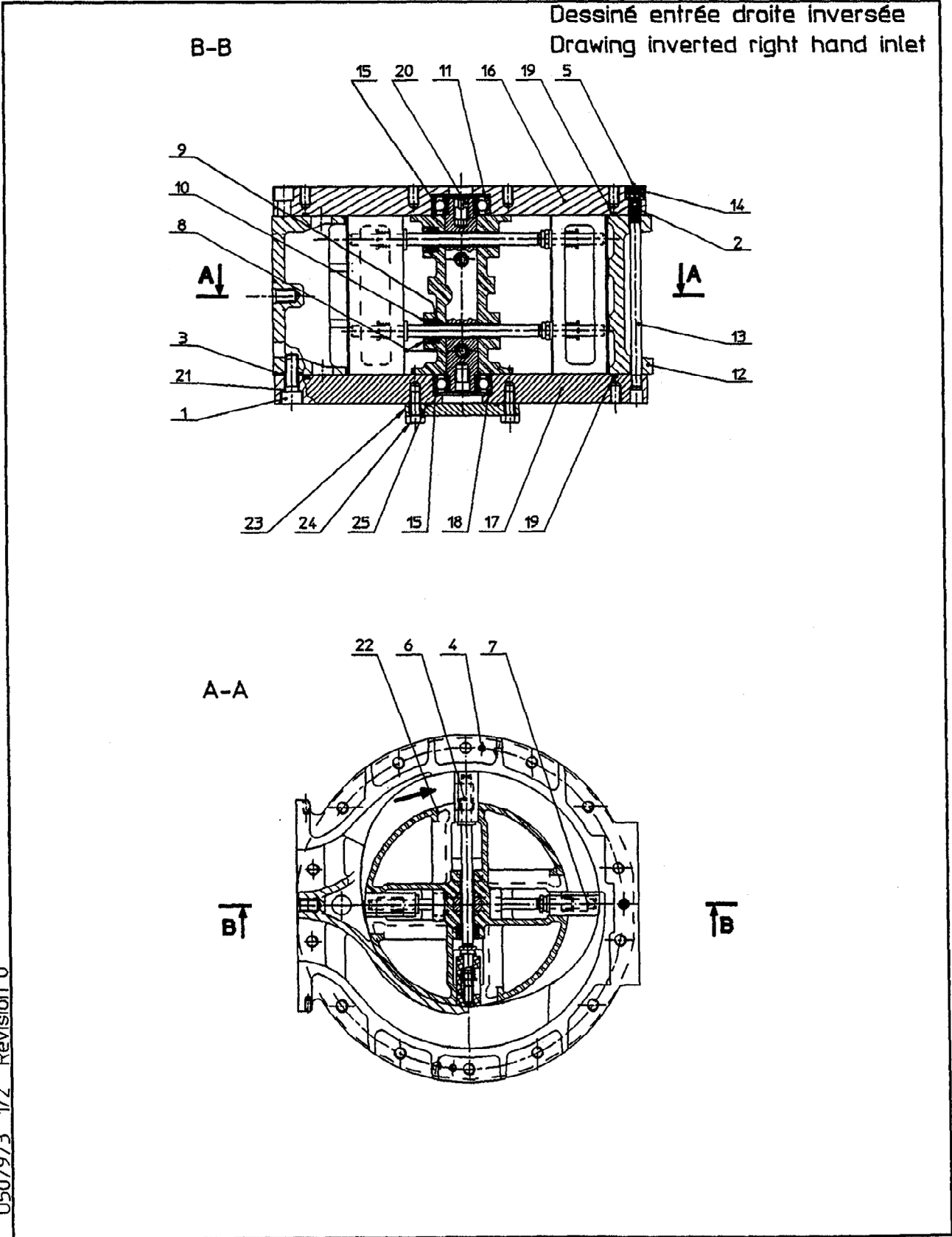
MEASURING CHAMBER MA 21-80/80 INVERTED RIGHT HAND INLET



MEASURING CHAMBER MA 21-80/80 INVERTED RIGHT HAND INLET

Rep	REFERENCE	Qty	DESCRIPTION
	437430-51		Measuring chamber MA 21-80/80 inverted righthand inlet
1	26376	28	Screw CHc, M10x30
2	26961	1	Screw C, M4x12
3	27176	4	O'ring
	27176-20	4	O'Ring (great cold option)
4	27726	4	Pin Ø6x35
5	903177-002	1	Lead seal
6	140823	1	Set Right Blade
7	140824	1	Set Left Blade
8	356315	4	Bushing
9	356316	4	Washer
10	356317	4	Adjusting ring
8+9+10	501718		Bushing subassebly
11	357942	2	Spring washer
12	358896	1	Body
13	358939	1	Rod
14	360369	1	Lead seal housing
15	362727-11	2	Ball bearing
	516024		Ball bearing (great cold option)
16	362733	1	Front flange
17	362734	1	Back flange
18	362735 à 362747 505300 à 505301 515651 à 515653	1	Wedging washer
19	364477 364477-20	2	O'Ring O'Ring (great cold option)
20	364770	1	Right hand inlet coupling
	364770-10	1	Left hand inlet coupling
21	364865	4	Ring
22	437390	1	Rotor

MEASURING CHAMBER MA 21-80/80 INVERTED RIGHT HAND INLET WITH INTAKE LOADING

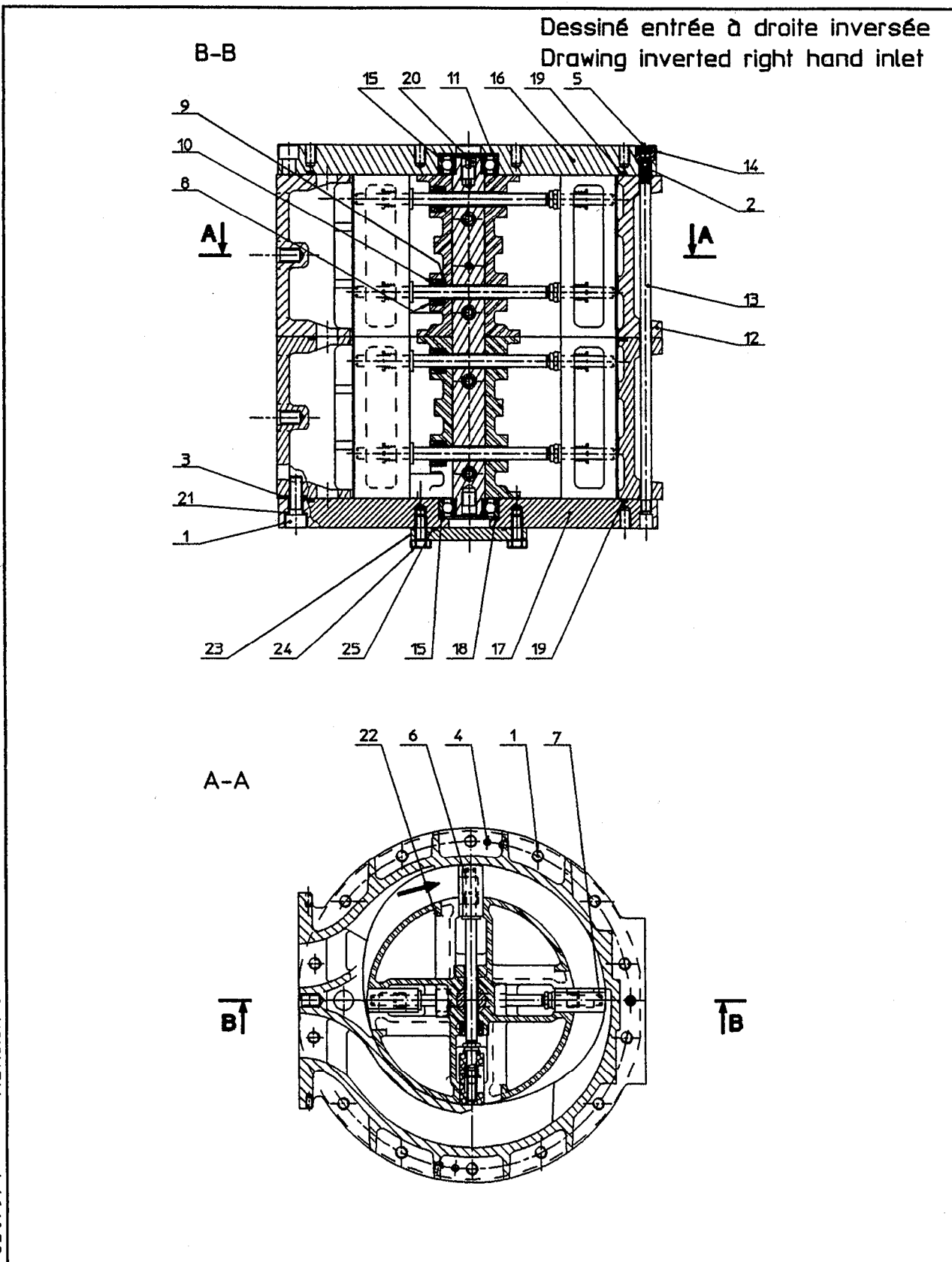


U507973 1/2 Révision 0

MEASURING CHAMBER MA 21-80/80 INVERTED RIGHT HAND INLET WITH INTAKE LOADING

Rep	REFERENCE	Qty	DESCRIPTION
	437430-43		Measuring chamber MA 21-80 Inverted right hand inlet
1	26376	28	Screw CHc, M10x30
2	26961	1	Screw C, M4x12
3	27176	4	O'Ring
	27176-20		O'Ring (great cold option)
4	27726	4	Pin Ø6x35
5	903177-002	1	Lead seal
6	140823	1	Set Right Blade
7	140824	1	Set Left Blade
8	356315	4	Bushing
9	356316	4	Washer
10	356317	4	Adjusting ring
8+9+10	501718		Bushing assembled
11	357942	2	Spring washer
12	358896	1	Body
13	358939	1	Rod
14	360369	1	Lead seal housing
15	362727-11	2	Ball bearing
	516024		Ball bearing (great cold option)
16	362733	1	Front flange
17	362754	1	Back flange
18	362735 à 362747 505300 à 505301 515651 à 515653	1	Wedging washer
19	364477	2	O'Ring
	364477-20		O'Ring (great cold option)
20	364770	1	Right hand inlet coupling
	364770-10	1	Left hand inlet coupling
21	364865	4	Ring
22	437390	1	Rotor
23	360180	1	Cover plate
24	25949	4	Screw HM 8 Lg 20
25	364476	1	O'Ring

MEASURING CHAMBER MA 21-80/150 INVERTED RIGHT HAND INLET WITH INTAKE LOADING

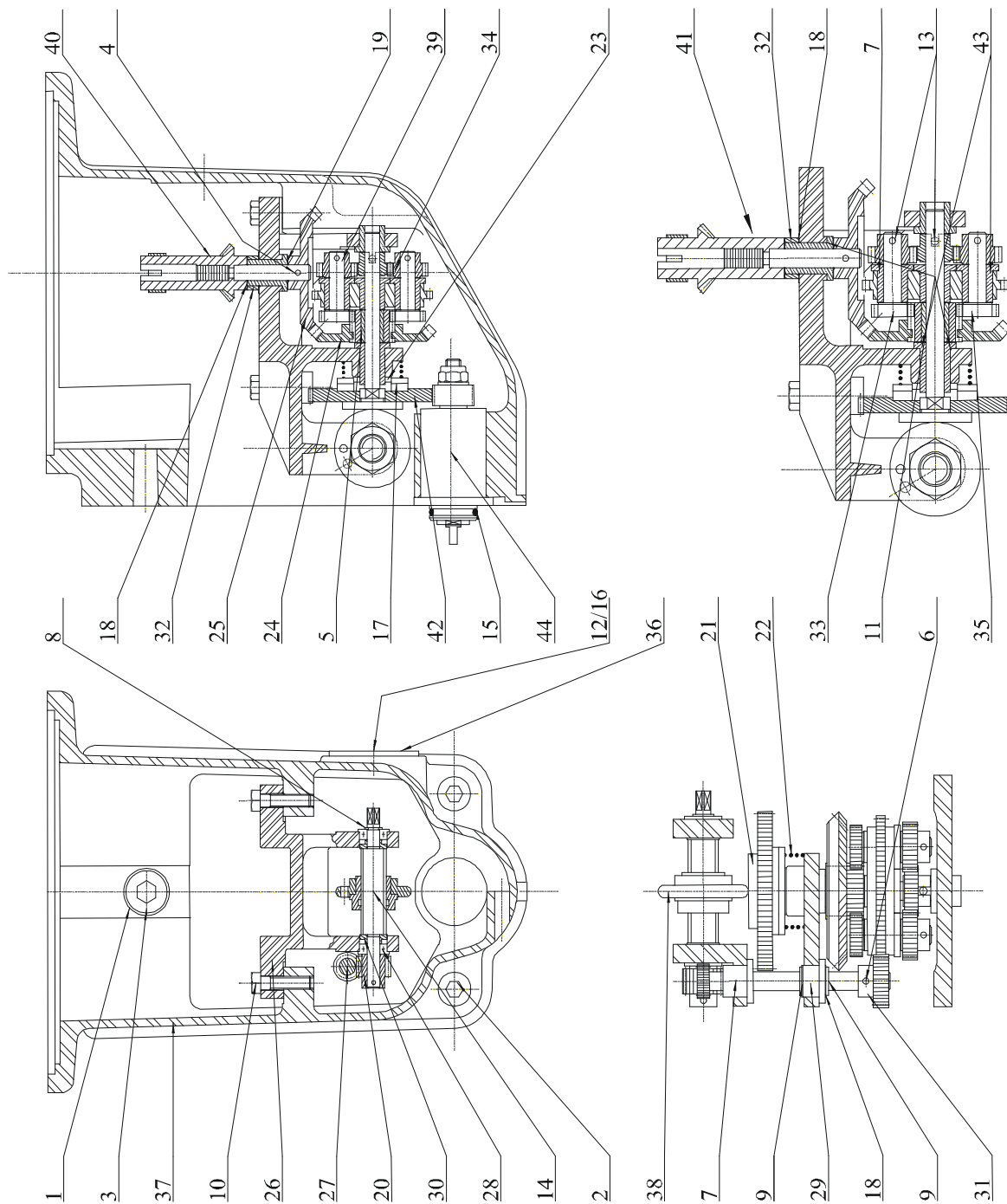


U507974 1/2 Révision 0

MEASURING CHAMBER MA 21-80/150 INVERTED RIGHT HAND INLET WITH INTAKE LOADING

Rep	REFERENCE	Qty	DESCRIPTION
	437431-41		Measuring chamber MA 21-80/150 inverted righthand inlet
1	26376	28	Screw CHc, M10x30
2	26961	1	Screw C, M4x12
3	27176	4	O'Ring
	27176-20		O'Ring (great cold option)
4	27726	4	Pin Ø6x35
5	903177-002	1	Lead seal
6	140823	2	Set Right Blade
7	140824	2	Set Left Blade
8	356315	8	Bushing
9	356316	8	Washer
10	356317	8	Adjusting ring
8+9+10	501718		Bushing assembled
11	357942	2	Spring washer
12	437730	1	Body
13	359055	1	Rod
14	360369	1	Lead seal housing
15	362727-11	2	Ball bearing
	516024		Ball bearing (great cold option)
16	362733	1	Front flange
17	362754	1	Back flange
18	362735 à 362747	1	Wedging washer
	505300 à 505301		
	515651 à 515653		
19	364477	3	O'Ring
	364477-20		O'Ring (great cold option)
20	364770	1	Right hand inlet coupling
	364770-10	1	Left hand inlet coupling
21	364865	4	Ring
22	437396	1	Rotor
23	360180	1	Cover plate
24	25949	4	Screw HM 8 Lg 20
25	364476	1	O'Ring

MICRO ADJUSTEMENT AB 21



MICRO ADJUSTEMENT AB 21

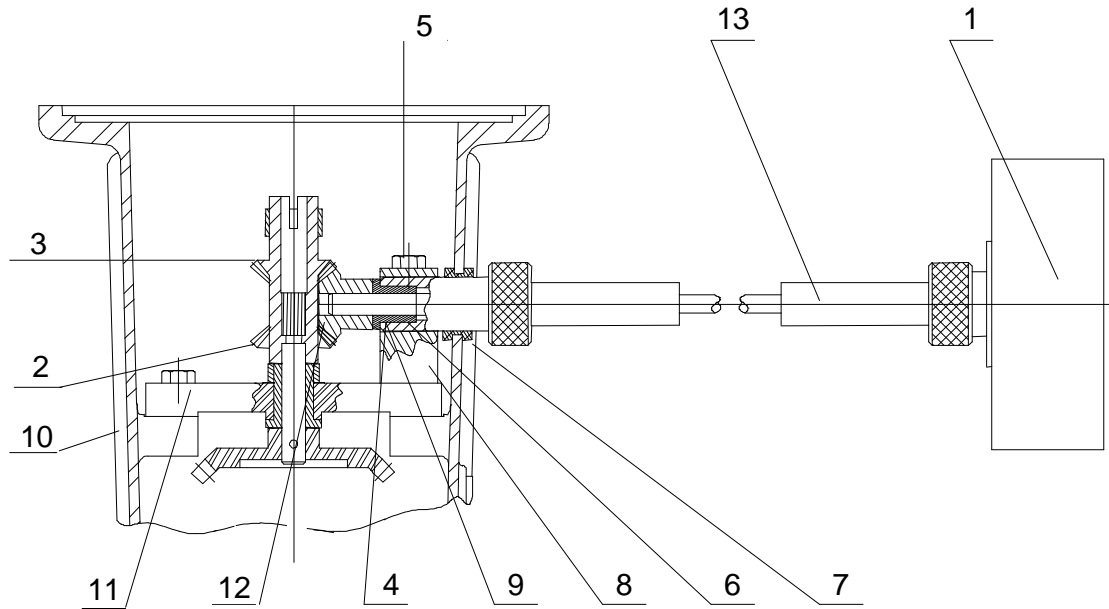
Rep	REFERENCE	Qty	DESCRIPTION
	436041-00		AB 21 for ZC 17-80-150-250 left hand inlet
	436041-10		AB 21 for ZC 17-80-150-250 right hand inlet
1	25038	1	Washer
2	25949	2	Screw M8 Lg 20
3	900017-021	1	Screw
4	902133-002	1	Pin Ø 2 Lg 12
5	903437-001	1	Bushing Ø6x9 Lg 12
6	26651	2	Pin Ø 1.5 Lg 9
7	900497-007	2	Bushing Ø 6x10 Lg 10
8	900497-009	1	Circlip
9	26806	2	Circlip Ø 6
10	26832	4	Screw M 5 Lg 20
11	900497-004	2	Bushing Ø 6x10 Lg 16
12	26976	1	Screw M4 Lg 10
13	27105	3	Pin Ø 2 Lg 10
14	27280	2	Ball bearing
15	27427	1	O'Ring
16	903177-002	1	Lead seal
17	353792-10	1	Thrust bearing
	353792-20		
18	356556	1	Washer
19	356898	8	Washer
20	359107	1	Endless screw
21	359110	1	Disc
22	359112	1	Spring
23	359397	1	Washer
24	360045	1	Pinion
25	360160	1	Pinion
26	360193	1	Chassis
27	360194	1	Pinion
28	360196	1	Set screw
29	360197	1	Bushing
30	360198	2	Thrust bearing
31	360201	1	Pinion
32	360206	1	Spacer frame
33	436015	1	Pinion assembled
34	360925	1	Pinion
35	436015	1	Pinion assembled
36	362010	1	Washer
37	362081-11	1	Cage
38	435388	1	Facetted pebble
39	436013	1	Drive pinion
40	437167	1	Pinion for left meter

MICRO ADJUSTEMENT AB 21

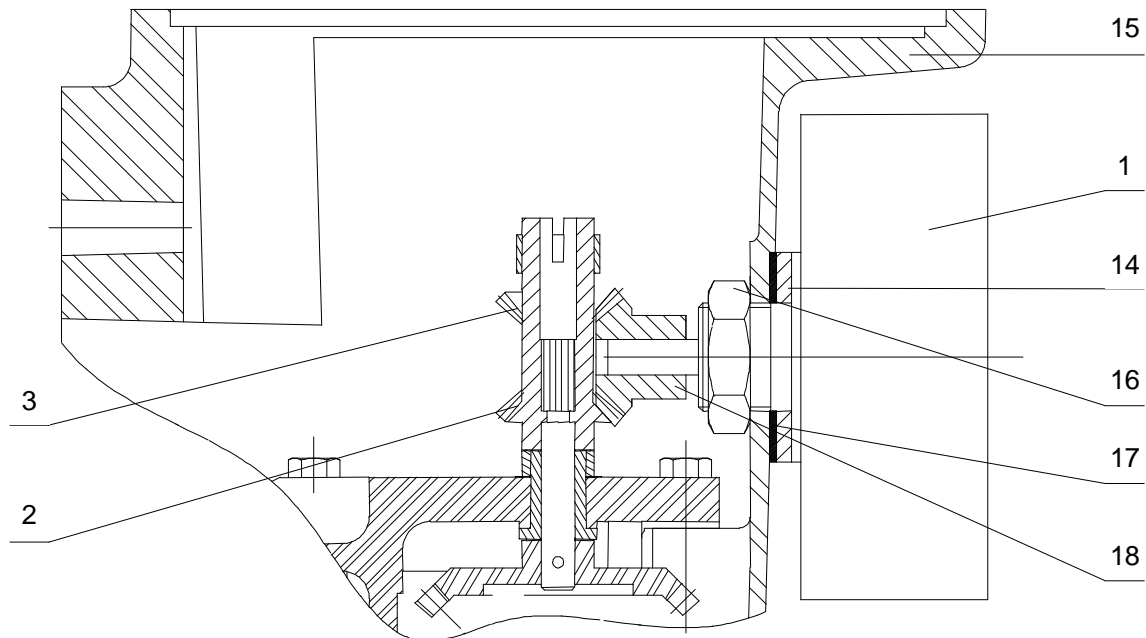
Rep	REFERENCE	Qty	DESCRIPTION
41	436017	1	Pinion for right meter
42	359111	1	Pinion for ZC 17-80-150-250
43	364738	3	Gasket
44	506691		Complete gasket for ZC 17-80-150-250
	506691-20		Complete gasket (great cold option)
45	435960-00		Mechanism for ZC 17-80-150-250 Left hand inlet
	435960-10		Mechanism for ZC 17-80-150-250 Right hand inlet
	359810		Adjusting key
	359809		Pin

INSTANTANEOUS FLOW METER-ADAPTATION

Lecture à distance



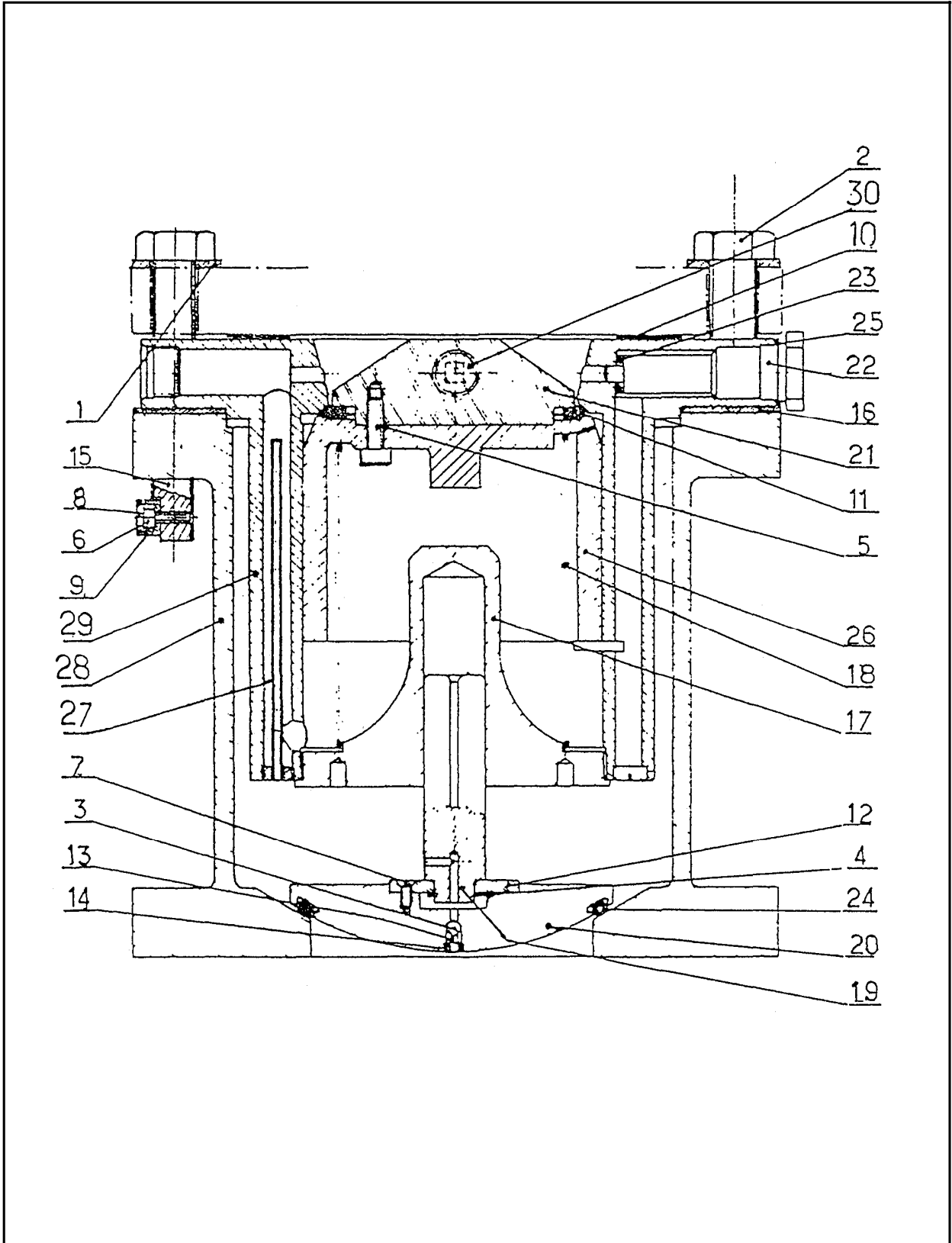
Lecture directe



INSTANTANEOUS FLOW METER-ADAPTATION

Rep	REFERENCE	Qty	DESCRIPTION
1	516010 516011		<u>Bulkmeter ZCE 5 80</u> Instantaneous flow meter I.F.M. – l/min
	516013 516014		<u>Bulkmeter ZCE 5 150</u> Instantaneous flow meter I.F.M. – l/min
3	435960-10		<u>For memory Right hand discharge Bulkmeter</u> Mechanism AB 21 <u>I.F.M. Remote reading</u>
4	900497-007	1	Ring
5	26821	2	Screw
6	26895	1	Ring
7	232630	1	Wire ring protector
8	359442	1	Level
9	359443	1	Guide
10	359495 359496		Junction box – I.F.M. left Junction box – I.F.M. right
11	360257	1	Chassis
12	360928	1	Pinion
13	435251	1	Hose
	436046		<u>I.F.M. Direct reading adaptation</u>
14	20519	1	Washer
15	359497	1	Junction box
16	359501	1	Nut
17	359502	1	Gasket
18	360928	1	Pinion

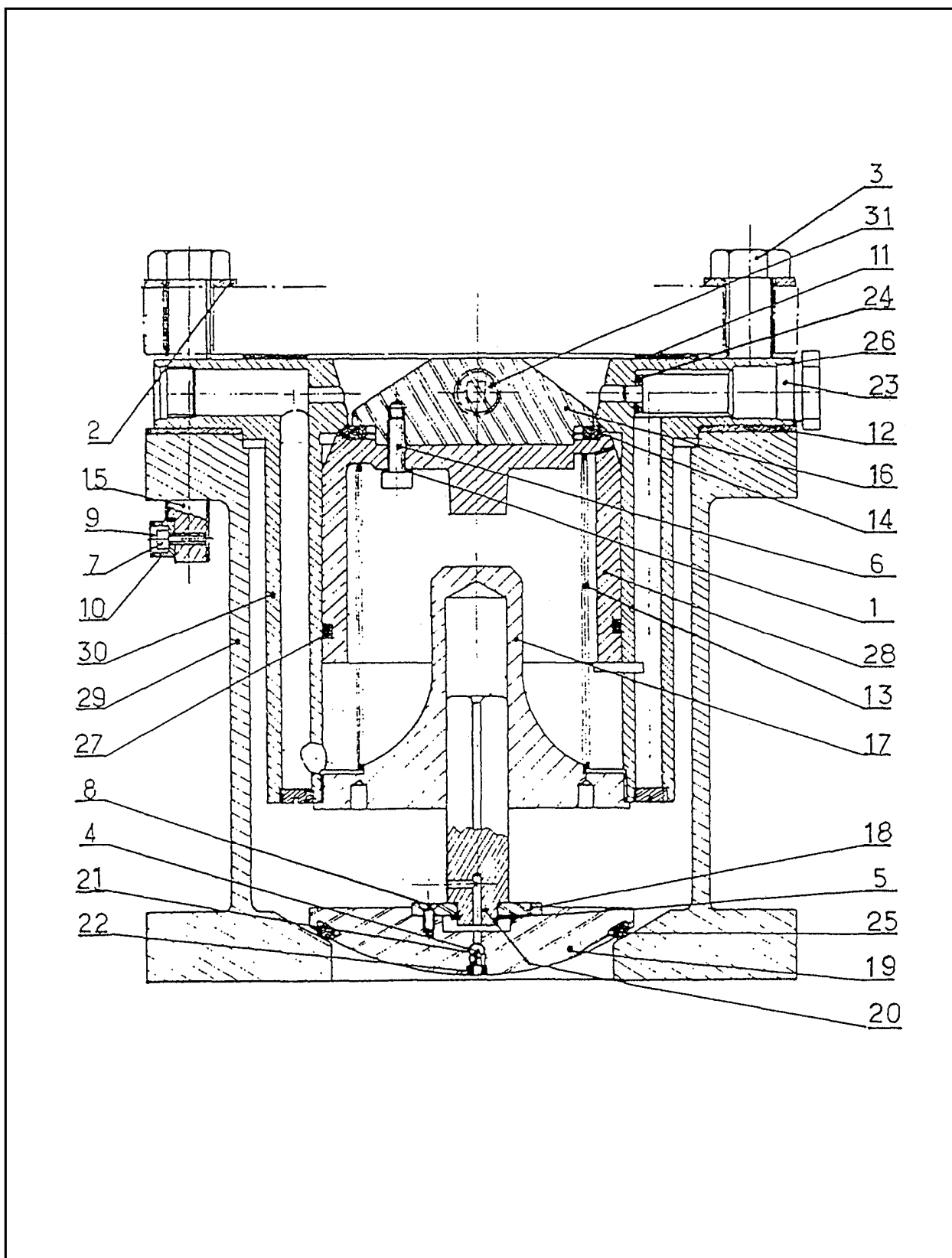
DIFFERENTIAL STOP – VALVE DE 3" WITH ONE ELECTRO - PILOTE



DIFFERENTIAL STOP – VALVE DE 3" WITH ONE ELECTRO - PILOTE

Rep	REFERENCE	Qty	DESCRIPTION
	438901		Differential stop valve Ø 80 with one electropilot
1	20524	8	Washer
2	21176	3	Screw H M16 – 80 AC
	21170	3	Screw H M16 – 50 AC C8,8
3	22003	1	Ball
4	25863	1	Circlip
5	26783	3	Screw
6	26857	2	Screw
7	26976	3	Screw
8	903177-002	2	Lead seal
9	234858	2	Housing for seal
10	354926	2	Gasket
11	355090	1	Main seal
12	357553	1	Small plate
13	357558	1	Spring
14	357560	1	Plug
15	357999	1	Screw for seal
	358007	1	Screw for seal
16	358000	1	Gasket
17	358002	1	Thrust block
18	358003	1	Spring
19	358005	1	Valve guide
20	358006	1	Valve
21	358206	1	Reflector
22	358703	1	Plug
23	358704	1	Gasket
24	364467	1	Gasket
25	364471	1	O'ring
26	365036	1	Piston
27	434843	1	Restrictor tube
28	434844	1	Body
29	438904	1	Housing
30	995902	1	Plug

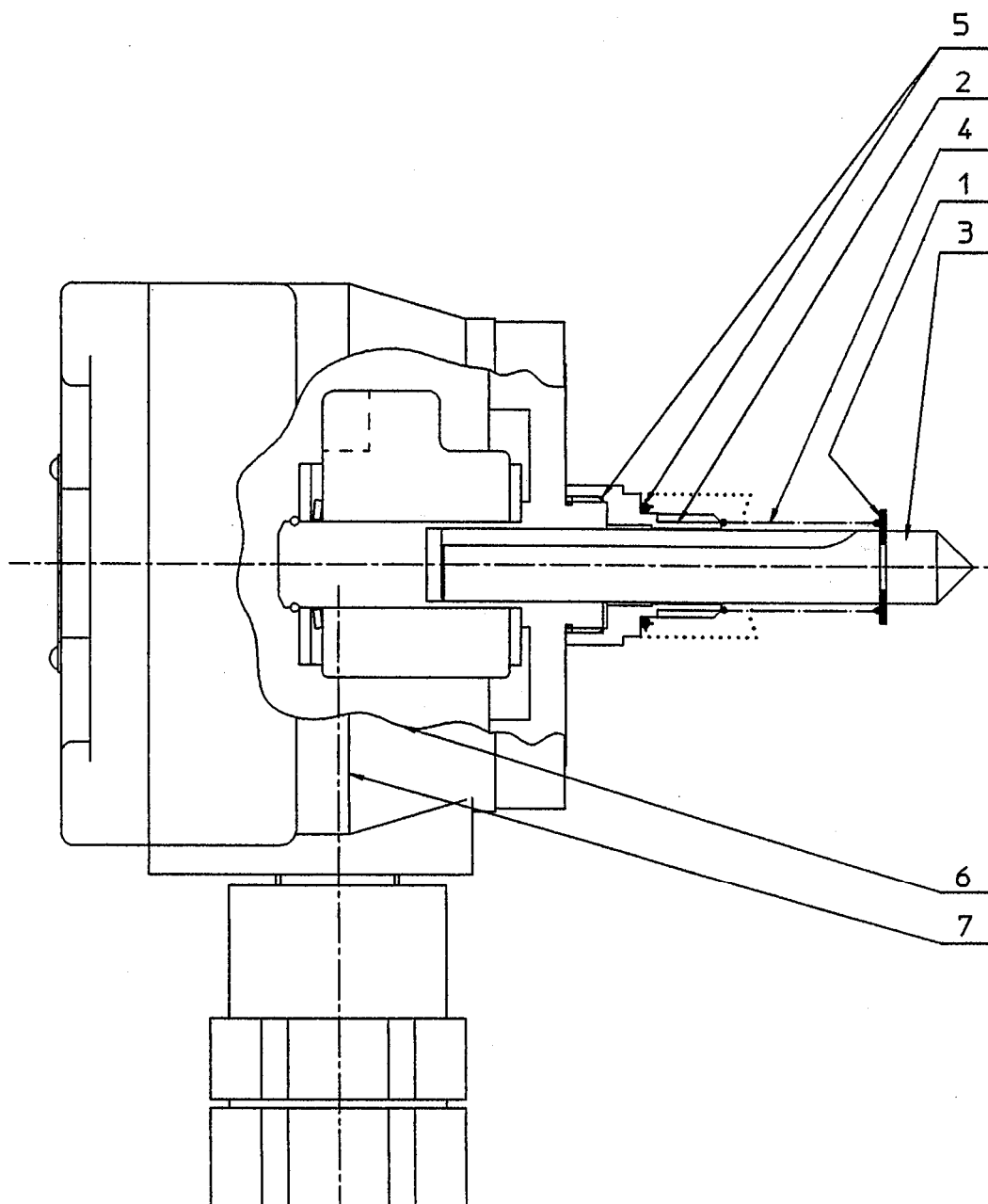
DIFFERENTIAL STOP – VALVE DE 4" WITH ONE ELECTRO - PILOTE



DIFFERENTIAL STOP – VALVE DE 4" WITH ONE ELECTRO - PILOTE

Rep	REFERENCE	Qty	DESCRIPTION
			Differential stop valve Ø 100 with one electropilot
1	20516	3	Washer
2	20524	16	Washer
3	21176	7	Screw H M16 – 80 AC
	21170	7	Screw H M16 – 50 AC C8,8
4	22003	1	Ball
5	25863	1	Circlip
6	26494	3	Screw
7	26857	2	Screw
8	26976	3	Screw
9	903177-002	2	Lead seal
10	234858	2	Housing for seal
11	353606	2	Gasket
12	353803	1	Gasket
13	353817	1	Spring
14	355070-21	1	Main seal
15	355513	1	Screw for seal
	355514	1	Screw for seal
16	357414	1	Reflector
17	357469	1	Thrust block
18	357553	1	Small plate
19	357555	1	Valve
20	357556	1	Valve guide
21	357558	1	Spring
22	357560	1	Plug
23	358703	1	Plug
24	358704	1	Gasket
25	507005	1	Gasket
26	364471	1	O'ring
27	504791	1	O'ring
28	365037	1	Piston
29	434708	1	Body
30	438905	1	Housing
31	995902	1	Plug

ELECTROPILOT VALVE



ELECTROPILOT VALVE

Rep	REFERENCE	Qty	DESCRIPTION
	438451		Electropilot
1	900047-006	1	Circlip type 7144 Ø9 à 12
2	358111	1	Mounting adaptor
3	358112	1	Plunger (valve)
4	358219	1	Spring
5	364471	2	O'ring
6	364575	1	Solenoide coil 220 V
	364576	1	Solenoide coil 127 V
	364577	1	Solenoide coil 48 V
	364735	1	Solenoide coil 240 V
7	438450	1	Electro-valve ATEX

STOP VALVE XAD 37 – DN 80 (3")

Ces pièces composent le sous-ensemble levier de commande électromécanique P501748 (souple verticale).
 Ces pièces composent le sous-ensemble levier de commande électromécanique P43742-11.
 Ces pièces composent le sous-ensemble levier de commande électromécanique P439152 (souple horizontale).

REP	Q'té	Partie	Matériau	Représentation	Fin	Travail	État
33	3	825793	15 - 2H - 108	-51EP			
34	1	B0111	15 - H - 110	-51EP-8.8			
31	8	B59254	PAILLONNE 1110	PL 1EP			
32	2	531536-10	B0111	PL 1EP			
29	1	515386-10	B0111	PL 1EP			
28	1	515386-10	B0111	PL 1EP			
27	1	515386-10	B0111	PL 1EP			
26	1	515386-10	B0111	PL 1EP			
25	1	515386-10	B0111	PL 1EP			
24	1	515386-10	B0111	PL 1EP			
23	1	515386-10	B0111	PL 1EP			
22	1	515386-10	B0111	PL 1EP			
21	1	515386-10	B0111	PL 1EP			
20	1	515386-10	B0111	PL 1EP			
19	1	515386-10	B0111	PL 1EP			
18	1	515386-10	B0111	PL 1EP			
17	1	515386-10	B0111	PL 1EP			
16	1	515386-10	B0111	PL 1EP			
15	1	515386-10	B0111	PL 1EP			
14	1	515386-10	B0111	PL 1EP			
13	1	515386-10	B0111	PL 1EP			
12	1	515386-10	B0111	PL 1EP			
11	1	515386-10	B0111	PL 1EP			
10	1	515386-10	B0111	PL 1EP			
9	1	515386-10	B0111	PL 1EP			
8	1	515386-10	B0111	PL 1EP			
7	1	515386-10	B0111	PL 1EP			
6	1	515386-10	B0111	PL 1EP			
5	1	515386-10	B0111	PL 1EP			
4	1	515386-10	B0111	PL 1EP			
3	1	515386-10	B0111	PL 1EP			
2	1	515386-10	B0111	PL 1EP			
1	1	515386-10	B0111	PL 1EP			

501748
 COMMANDE ELECTRO MECHANIQUE ELECTRIQUE
 Echelle 1:1

438152
 COMMANDE ELECTRO MECHANIQUE MECHANIQUE
 Echelle 1:1

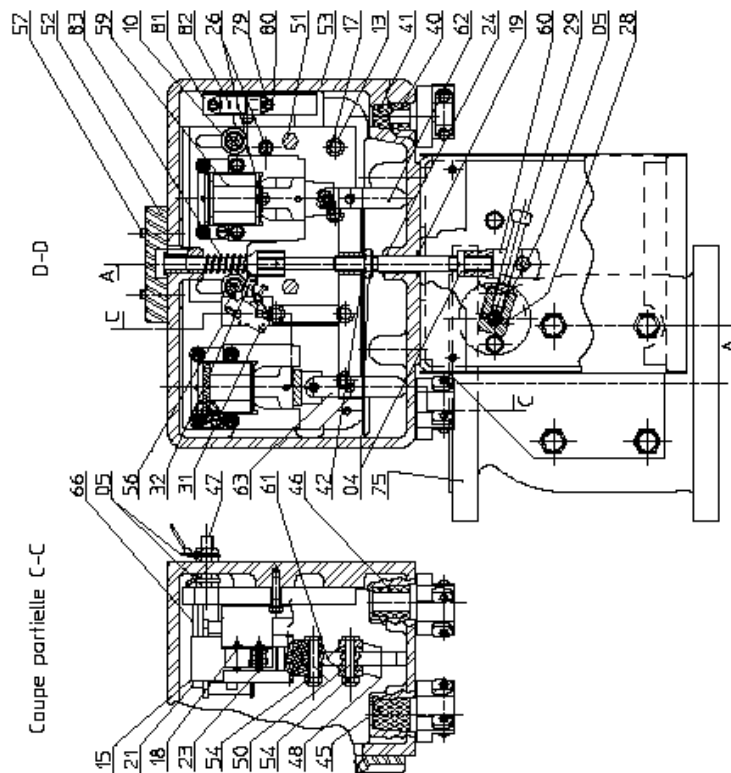
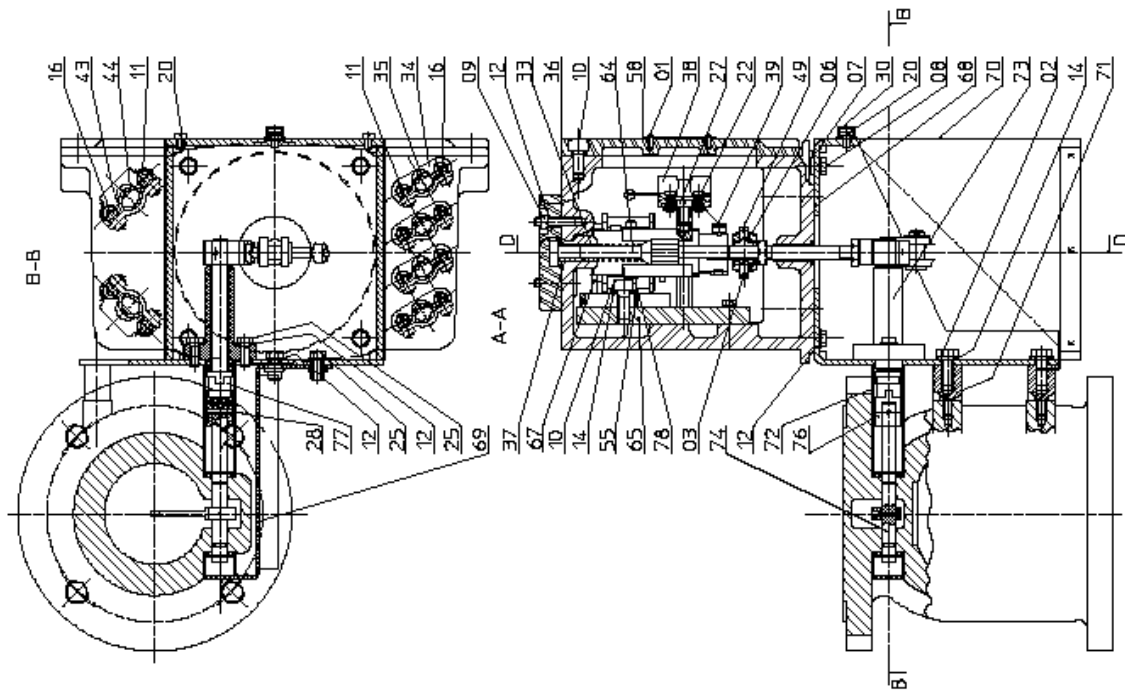
437445-11
 COMMANDE ELECTRO MECHANIQUE MECHANIQUE
 Echelle 1:1

ENTREPRISE: SATAM Adresse: SATAM S.A. Professionnel de Santé:	Date de l'opération: 2010-11-11 Signature: [Signature] Fonction: [Fonction]
---	---

STOP VALVE XAD 37 – DN 80 (3")

Rep	REFERENCE	Qty	DESCRIPTION
	501796-01		Stop valve XAD 37
1	22003	1	Ball
2	26347	1	Elasticated pin 1,5x6
3	26857	2	Screw C M5x8AC
4	27301	1	Gasket BS 10,7x17x1,5
5	53443	1	Thread of filling
6	53444	1	Lead of scellement
7	234858	1	Housing for seal
8	354926	2	Gasket
9	355090	1	Main seal
10	357558	1	Spring of the ball
11	357560	1	O'ring
12	357651	1	Housing for seal
13	358003	1	Spring of the piston
14	358007	1	Screw H M16
15	362901	1	Body
16	364146	1	Spring of the pilot
17	501803	1	Spring spiral
18	501807	1	Non return valve
19	501810	1	Seat
20	507008	1	O'ring 2,6 x 1,9
21	507278	1	O'ring 69,22 x 5,33 R38
22	507279	1	O'ring 109,5 x 3
23	514681	2	Adhesive disk black rubber 3 "
24	515937	1	Surmoulé pilot
25	362907-11	1	Piston
26	364142-10	1	Déфлектор
27	515928-10	1	Pointeau of regulation
28	515929-10	1	Body of saw
29	515930-10	1	Housing
30	903177-002	2	Lead seal
31	20524	8	Washer M D16
32	21169	7	Screw H M16
33	26783	3	Screw CHc M8x14
	437945-11	1	Controlling lever - Mechanical control for VR 7889 preset
	501748	ou 1	Controlling lever – Electro magnetic control for vertical installation

STOP VALVE XAD 37 ELECTRO-MECHANICALLY CONTROLLED



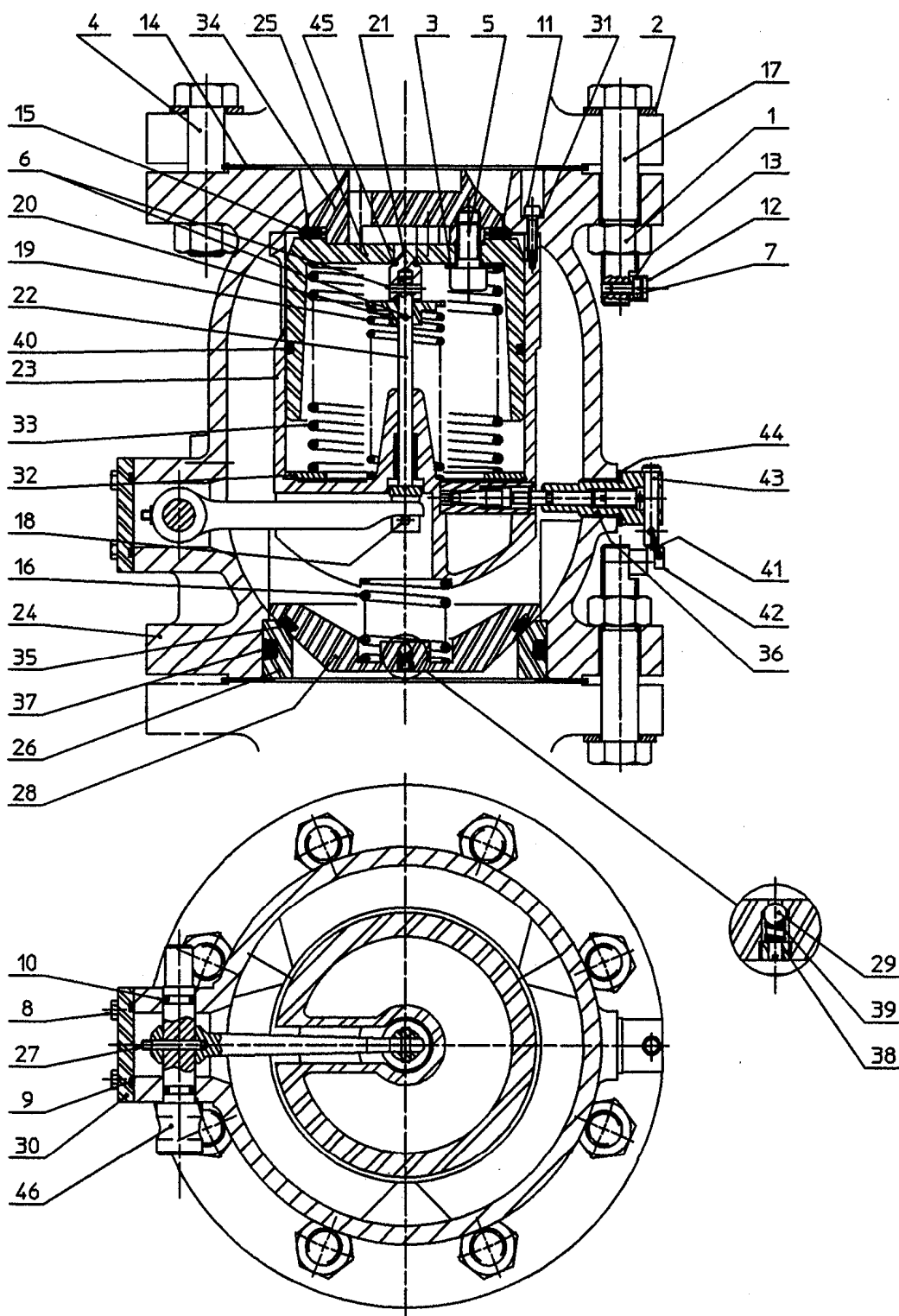
STOP VALVE XAD 37 ELECTRO-MECHANICALLY CONTROLLED

Rep	REFERENCE	Qty	DESCRIPTION
	500877		Stop valve XAD 37 électro-mechanically controlled
1	9675	4	Rivet Ø 2,9
2	20017	4	Screw H M8x20
3	20120	2	Pin V 1,6x12
4	20415	2	Nut Hm M10
5	20445	5	Nut Hm M8
6	20511	2	Washer Z6
7	20532	8	Washer Z8
8	21075	4	Screw H M6x25
9	20400	4	Nut H M6
10	25949	10	Screw CHc M8x20
11	26480	12	Screw CHc M6x14
12	26742	12	Washer Ø6,5x14x0,5
13	26744	14	Washer Ø5,5x12x0,8
14	903437-001	6	Washer Ø8,5x18x1,2
15	26779	8	Washer Ø4,5x10x0,8
16	26816	12	Screw H M5x12
17	26832	5	Screw H M5x20
18	26846	2	Nut H M2,5
19	900497-003	1	Ring Ø10x13x16
20	26857	5	Screw Tc M5x8
21	515287	8	Screw CHc M4x40
22	27116	8	Screw Tc M4x12
23	26972	2	Screw Tc M2,5x30
24	27018	1	Ring Ø10x13x16
25	27094	4	Screw H M6x16
26	27287	2	Screw CHc M5x10
27	20077	2	Screw Tc M6x12
28	362885	3	Pin
29	27346	1	Screw CHc M8x60
30	903177-002	3	Lead seal
31	144329	1	Micro switch
32	902622	1	Lever
33	232145	1	Ring Ø8x12x12
34	238607	4	Bulkhead
35	902600	4	Collar
36	353089	1	Cover
37	356563	1	Ring Ø8x12x16
38	356961	2	Landmark
39	356968	1	Support
40	356970	1	Stuffing
41	356971	3	Stuffing
42	359397	1	Washer
43	359477	2	Bulkhead

STOP VALVE XAD 37 ELECTRO-MECHANICALY CONTROLLED

Rep	1 REFER2ENCE	Qty	DESCRIPTION
44	359478	2	Collar
45	359482	1	Stuffing
46	359483	1	Stuffing
47	359815	1	Tie rot
48	360850	2	Pendulum
49	360851	1	Square guide
50	360854	4	Axle
51	360855	2	Column
52	360857	1	Hood
53	360858	1	Junction bar
54	361841	4	Nut nylstop M6
55	362302-10	1	Support mobile electromagnet
56	362496-10	1	Support minicontact breaker
57	363798	4	Threaded tierod
58	363965	1	Plate
59	516610	2	Electro-magnet 220 V
	516610-10	2	Electro-magnet 110 V
60	515082	1	Fork - joint
61	501329	4	Drive washer
62	501330	1	Right link
63	501331	1	Left link
64	501333	1	Controlling axle
65	501334-10	1	Support plate
66	511161-25	4	Stud MF 4x25
67	511161	2	Stud MF 4x15
68	501735	1	Support case AC 16
69	501738	1	Square cover
70	501740	1	Bonnet
71	501741	4	Stud
72	501743	1	Protection pipe
73	501745	1	Coupling
74	501748	1	Controlling lever
75	501796-01	1	Stop valve XAD 37
76	502432	1	Coupling box
77	506266	1	Disc coupling
78	511161-12	2	Stud MF 4x12
79	26827	2	Screw TF M3x10
80	900008-012	2	Washer - 9
81	516690	1	Support relay
82	516701	1	Relay
83	516702	1	Spring

ADJUSTABLE STOP VALVE XAD 36 – DN 100 (4")



U507960 1/3 Révision 1 Après 12/98

ADJUSTABLE STOP VALVE XAD 36 – DN 100 (4")

Rep	REFERENCE	Qty	DESCRIPTION
	504959		Adjustable Stop valve XAD 36
1	20440	16	Nut
2	20524	16	Washer
3	27301	3	Washer
4	21947	14	Screw
5	26494	3	Screw
6	364769	2	Pin
7	26857	2	Screw C M5x8
8	26861	4	Screw
9	364473	1	O'ring
10	507007	2	O'ring
11	27471	3	Screw
12	903177-002	2	Lead seal
13	234858	2	Housing for seal
14	353606	2	Gasket
15	355070-21	1	Main seal
16	501410	1	Spring
17	357999	2	Sealing screw
18	360449	1	Axle
19	360450	1	Spring
20	360451-11	1	Spring stop
21	360452-21	1	Pilot
22	360509-11	1	Axle
23	504960	1	Housing
24	361981-41	1	Body
25	361998-51	1	Piston
26	500525	1	Seat
27	362000	1	Pin
28	500523	1	Non return valve
29	22003	1	Ball
30	362003	1	Cover
31	507015	3	Gasket
32	362811	1	Washer
33	362812	1	Spring
34	500524	1	Piston nose
35	507005	1	O'ring
36	504982	1	Adjustment device
37	507006	1	O'ring
38	357560	1	Plug
39	357558	1	Spring
40	504775	1	O'ring
41	902404-002	1	Wire
42	902403	1	Lead seal
43	504962	1	Seal axle
44	507016	1	Gasket
45	438011	1	Controlling lever - control for VR 7889 preset . Right hand entry
	438012	1	Controlling lever - control for VR 7889 preset . Left hand entry

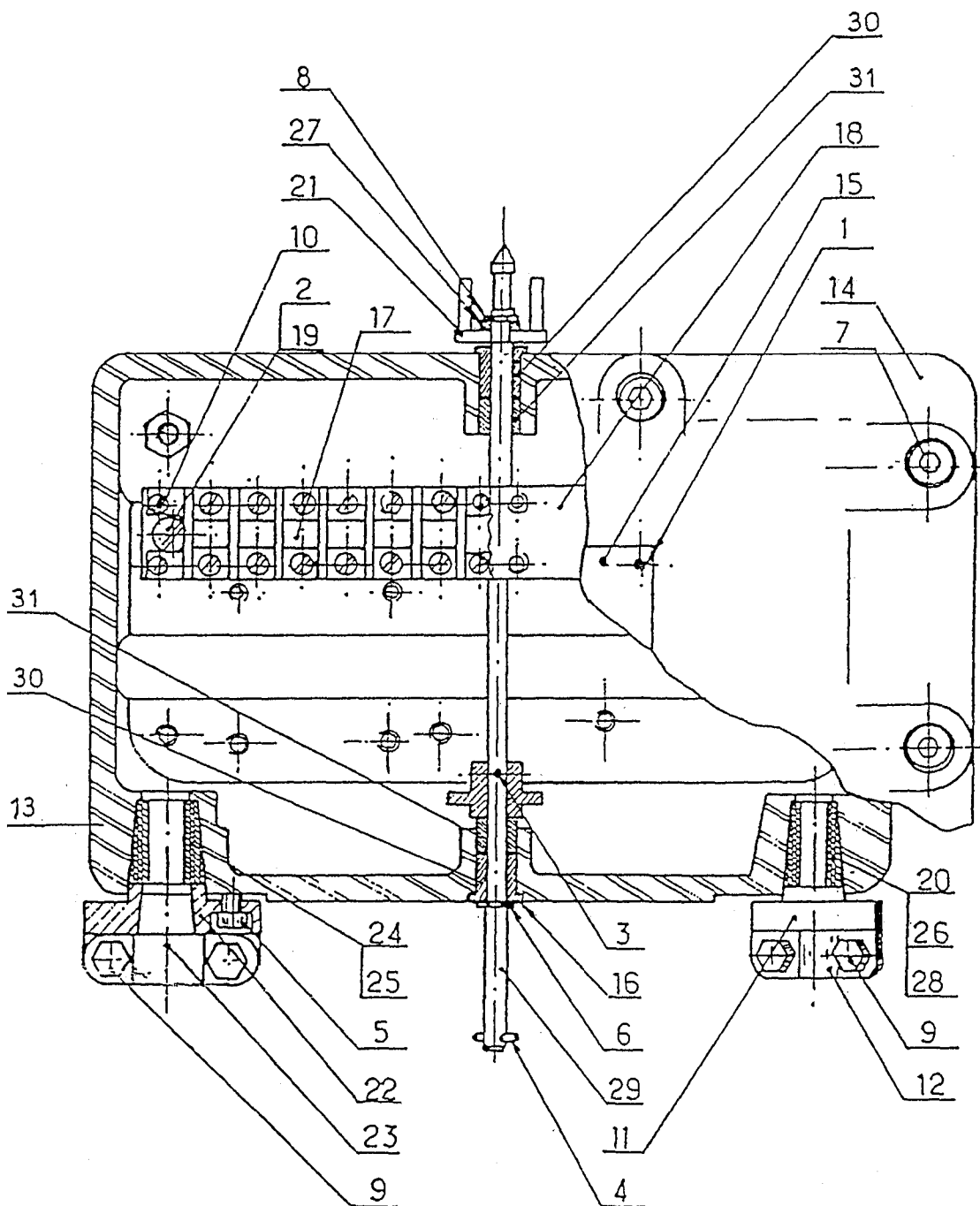
STOP VALVE XAD 36 ELECTRO-MECHANICALY CONTROLLED

Rep	REFERENCE	Qty	DESCRIPTION
	501684		Stop valve XAD 36 électro-mechanicaly controlled
1	9675	4	Rivet Ø 2,9
2	20077	2	Screw Tc M6x12
3	361841	4	Nut M6
4	26427	1	Pin G01 – Ø 4x24
5	20411	1	Nut H M8
6	20415	2	Nut Hm M10
7	20417	2	Nut H M10
8	20445	4	Nut Hm M8
9	20511	2	Washer Z6
10	20532	8	Washer Z8
11	21075	4	Screw H M6x25
12	25337	2	Gudgeon bolt M10
13	20400	4	Nut H M6
14	25949	10	Screw CHc M8x20
15	26480	12	Screw CHc M6x14
16	26742	8	Washer Ø6,5x14x0,5
17	26744	5	Washer Ø5,5x12x0,8
18	903437-001	2	Washer Ø8,5x18x1,2
19	26776	2	Washer Ø10,5x22x1,5
20	26779	8	Washer Ø 4,5x10x0,8
21	26816	12	Screw H M5x12
22	26832	5	Screw H M5x20
23	515287	8	Screw CHc M4x40
24	26846	2	Nut H M2,5
25	900497-003	1	Ring Ø10x13x16
26	26857	3	Screw Tc M5x8
27	27116	8	Screw Tc M4x12
28	26972	2	Screw Tc M2,5x30
29	27018	1	Ring Ø10x13x16
30	27287	2	Screw CHc M5x10
31	903177-002	1	Lead seal
32	144329	1	Micro switch
33	902622	1	Lever
34	232145	1	Ring Ø8x12x12
35	238607	4	Bulkhead
36	902600	4	Collar
37	353089	1	Cover
38	363965	1	Plate
39	356563	1	Ring Ø8x12x16
40	356961	2	Landmark
41	356970	1	Stuffing
42	356971	3	Stuffing
43	359397	1	Washer
44	359477	2	Bulkhead

STOP VALVE XAD 36 ELECTRO-MECHANICALY CONTROLLED

Rep	1 REFER2ENCE	Qty	DESCRIPTION
45	359478	2	Collar
46	359482	1	Stuffing
47	359483	1	Stuffing
48	359815	1	Tie tot
49	360850	2	Pendulum
50	360851	1	Square guide
51	501330	1	Right link
52	501329	4	Drive washer
53	360854	4	Axle
54	360855	2	Column
55	360857	1	Hood
56	360858	1	Junction box
57	501331	1	Left link
58	361139	1	Handle
59	362302-10	1	Support
60	511161-25	4	Drive MF 4x25
61	511161	2	Drive MF 4x15
62	362496-10	1	Support minicontact breaker
63	356968	1	Support
64	362718	1	Strengthening lever
65	27346	1	Screw CHc M8x60
66	504959	1	Stop valve XAD 36
67	501334-10	1	Support plate
68	516610	2	Electro-magnet 220V
	516610-10	2	Electro-magnet 110V
69	515082	1	Fork-joint
	515318	1	Screw
	20445	1	Nut
70	501333	1	Controlling axle
71	501328	1	Support case AC 16
72	501393	1	Bonnet
73	437677	1	Controlling lever
74	363798	4	Threaded tierod
75	20120	2	Pin
76	511161-12	2	Stud MF 4x12
77	26827	2	Screw TF M3x10
78	900008-012	2	Washer - 9
79	516690	1	Support relay
80	516701	1	Relay
81	516702	1	Spring
82	508712	1	Heating resistance

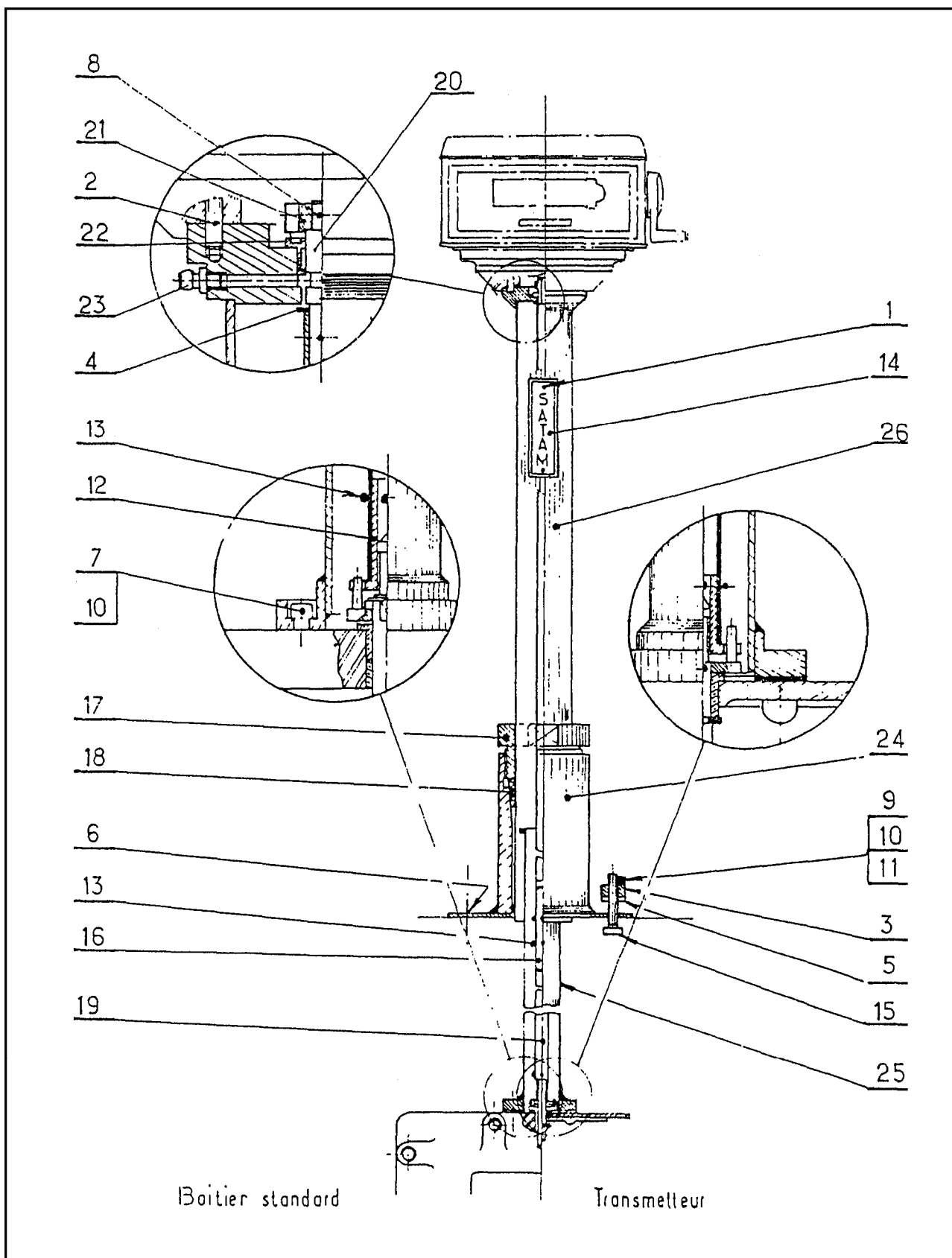
ELECTRICAL JUNCTION BOX AC - 7



ELECTRICAL JUNCTION BOX AC - 7

Rep	1 REFER2ENCE	Qty	DESCRIPTION
	434411		Electrical junction box
1	9675	4	Pin rivet
2	20077	2	Screw
3	25481	1	Pin
4	26631	1	Pin
5	26480	12	Screw
6	26780	1	Circlip
7	26783	8	Screw
8	26808	1	Truarc ring
9	26848	12	Screw
10	27116	8	Screw
11	238607	4	Bulkhead
12	902600	4	Necklace
13	353088-11	1	Cage
14	353089	1	Blanking Cover
15	364940	1	Name plate
16	356898	1	Washer
17	356961	2	Landmark
18	356968	1	Support
19	356969	2	Column
20	356971	3	Stuffing box gland
21	359150-11	1	Driver
22	359477	2	Bulkhead
23	359478	2	Necklace
24	359482	2	Stuffing box gland
25	359483	2	Stuffing
26	361001	1	Stuffing
27	362399	1	Washer
28	362921	1	Stuffing
29	437414	1	Driving Axle
30	356563	2	Ring
31	356967	2	Ring

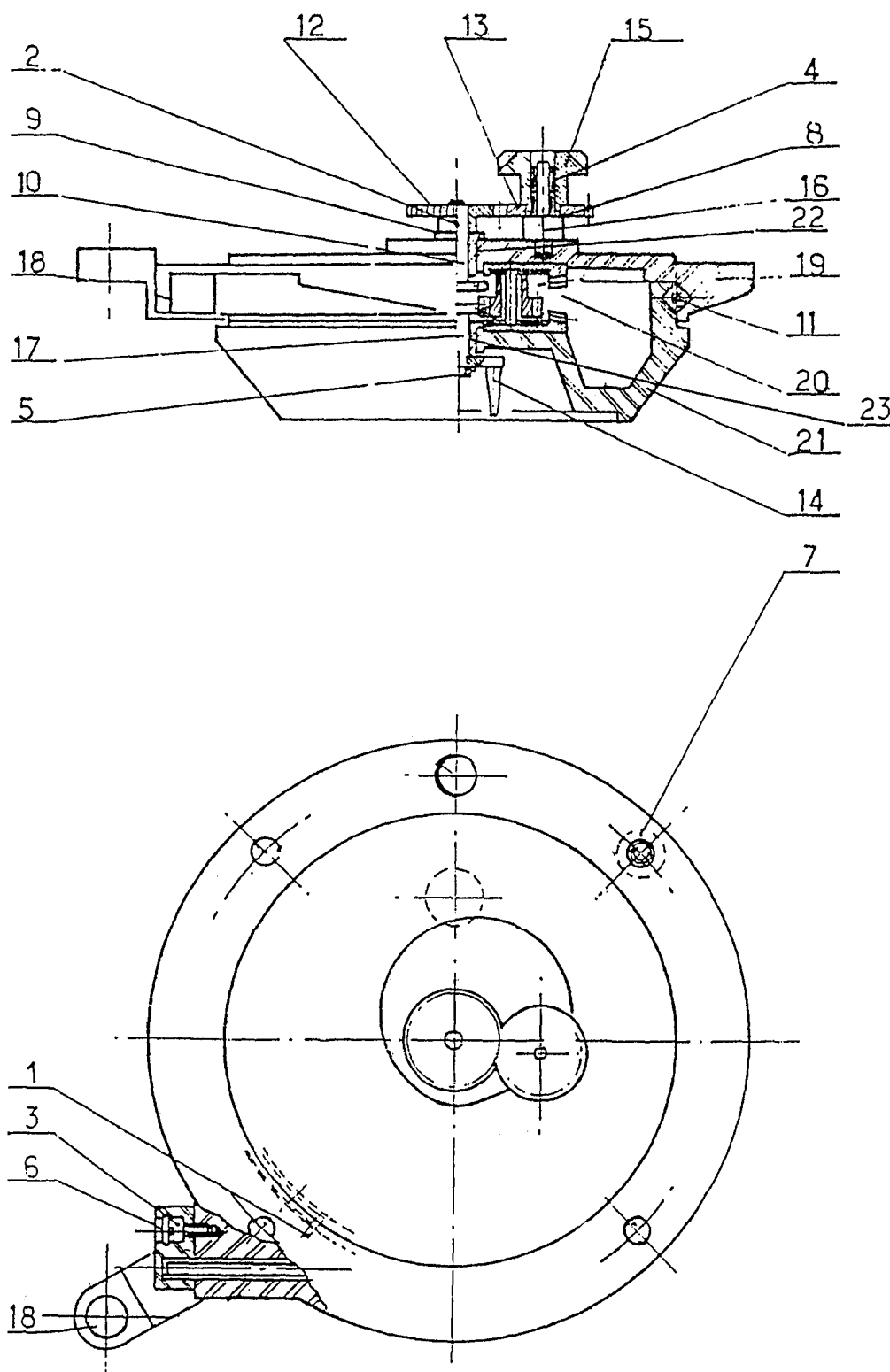
ADJUSTABLE EXTENDED DRIVE XAB - 28



ADJUSTABLE EXTENDED DRIVE XAB - 28

Rep	1 REFER2ENCE	Qty	DESCRIPTION
	436370-11		Extented drive complete
1	9680	2	Screw
2	20095	3	Screw
3	20402	4	Nut
4	20516	1	Washer
5	20590	4	Washer
6	21119	3	Screw
7	26480	4	Screw
8	26631	1	Pin
9	26850	1	Screw
10	903177-002	2	Lead seal
11	234858	1	Housing for seal
12	353771	1	Drive
13	353784	3	Pin
14	354719	1	Name plate
15	355495	1	Sealing screw
16	359866	1	Axle
17	360780	1	Nut
18	360781	1	Cone
19	360787	2	Central driver tube
20	363273	1	Driving axle
21	363274	1	Drive
22	363278-10	1	Ball bearing
	363278-20	1	Ball bearing ring
23	363279	1	Lubrificator
24	436372	1	Support
25	436374	1	Lower cover pipe
26	437721	1	Upper cover pipe

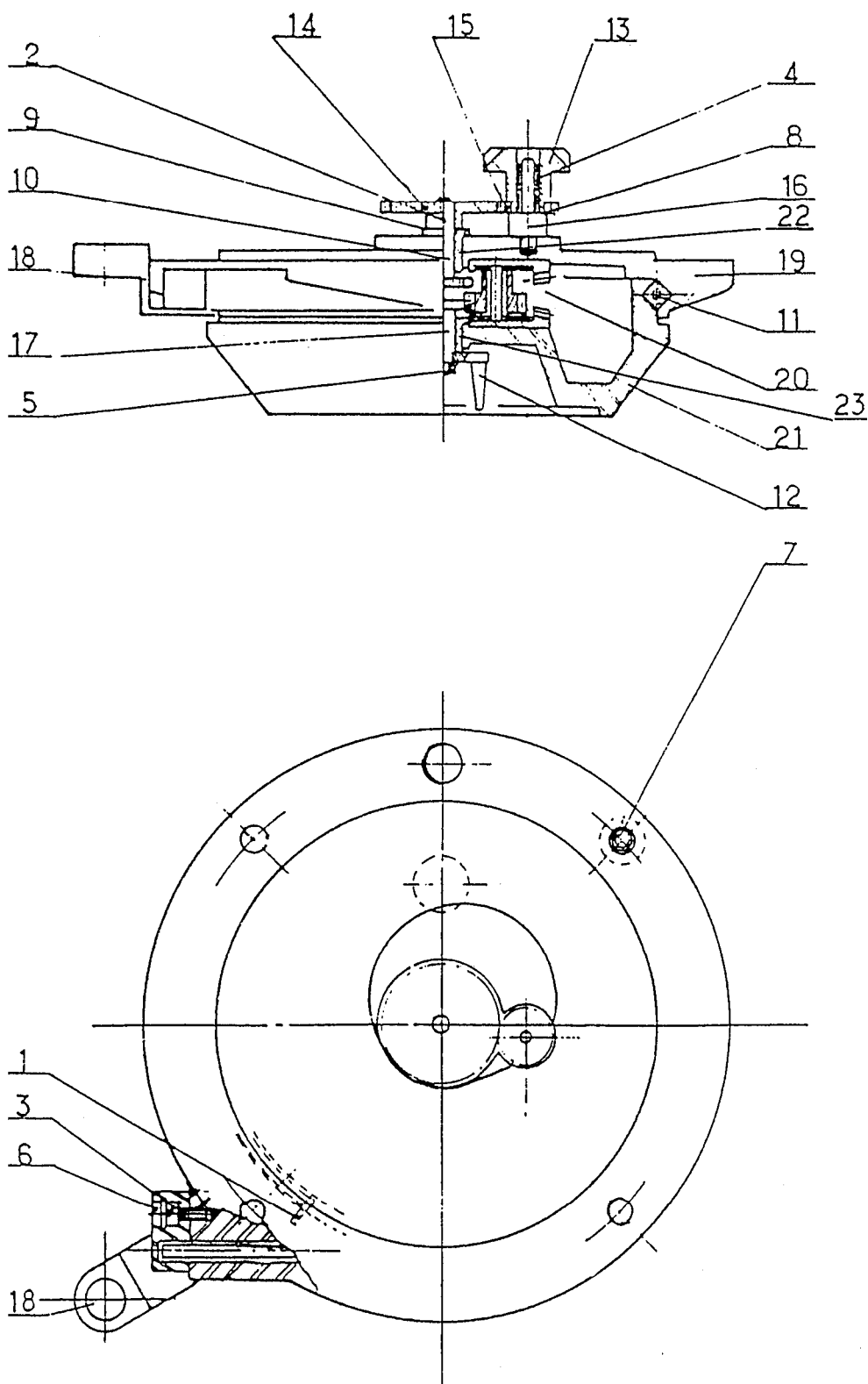
SWIVEL XAB.2 (ZCE 5-80)



SWIVEL XAB.2 (ZCE 5-80)

Rep	¹ REFER2ENCE	Qty	DESCRIPTION
	435925-21		Swivel XAB 2 (ZCE 5-80)
1	26249	1	Pin
2	902133-002	1	Pin
3	26863	1	Screw
4	362576	2	Ring
5	27743	1	Nut
6	903177-002	1	Lead seal
7	230134	4	Screw
8	355072	2	Washer
9	356556	1	Washer
10	357459	1	Pinion
11	357465	1	Rotating joint
12	359123	1	Pinion
13	359128-11	1	Pinion
14	359150-41	1	Driver
15	359908-11	1	Pinion
16	362730	1	Axle
17	363262	1	Pinion
18	363263	1	Housing for seal
19	434675	1	Upper stand
20	434676	1	Gear support
21	435161	1	Lower stand
22	900497-004	1	Ring
23	900497-007	1	Ring

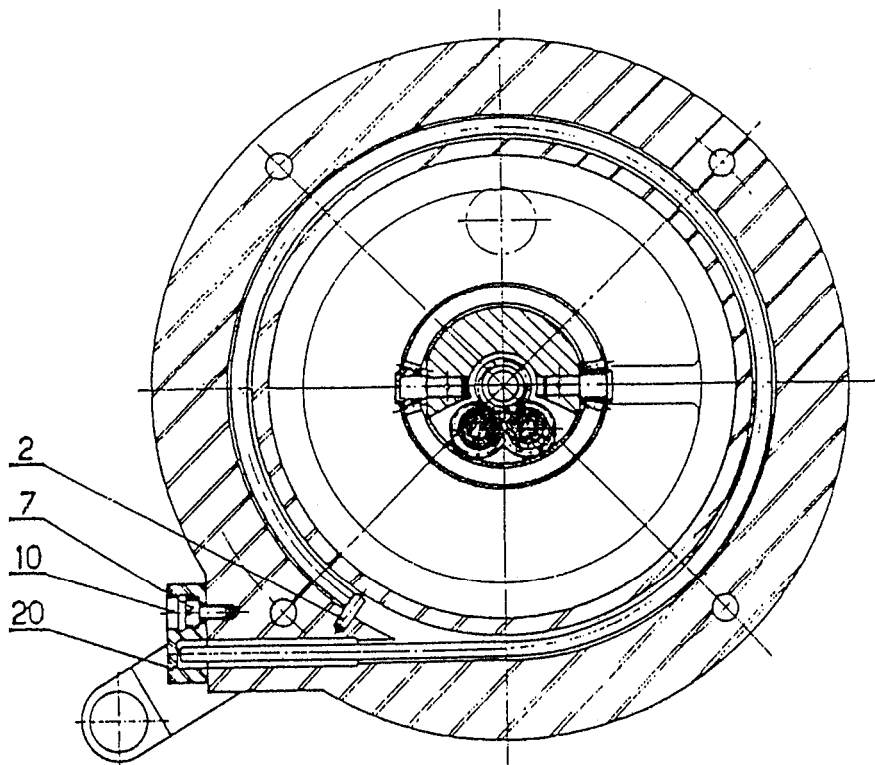
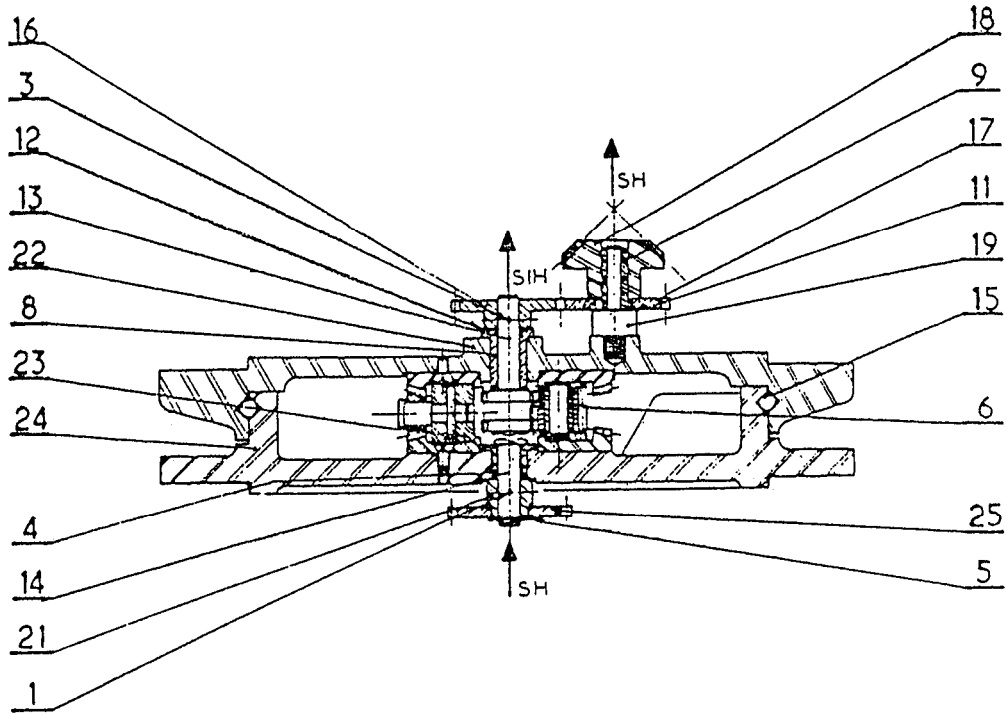
SWIVEL XAB.2 (ZCE 5-150)



SWIVEL XAB.2 (ZCE 5-150)

Rep	¹ REFERENCE	Qty	DESCRIPTION
	435925-31		Swivel XAB 2 (ZCE 5-150)
1	26249	1	Pin
2	902133-002	1	Pin
3	26863	1	Screw
4	27213	2	Ring
5	27743	1	Nut
6	903177-002	1	Lead seal
7	230134	4	Screw
8	355072	2	Washer
9	356556	1	Washer
10	357459	1	Pinion
11	357465	1	Rotating joint
12	359150-41	1	Driver
13	359908	1	Conical pinion
14	360541	1	Pinion
15	360542	1	Pinion
16	362730	1	Axle
17	363262	1	Pinion
18	363263	1	Housing for seal
19	434675	1	Upper stand
20	434676	1	Gear support
21	435161	1	Lower stand
22	900497-004	1	Ring
23	900497-007	1	Ring

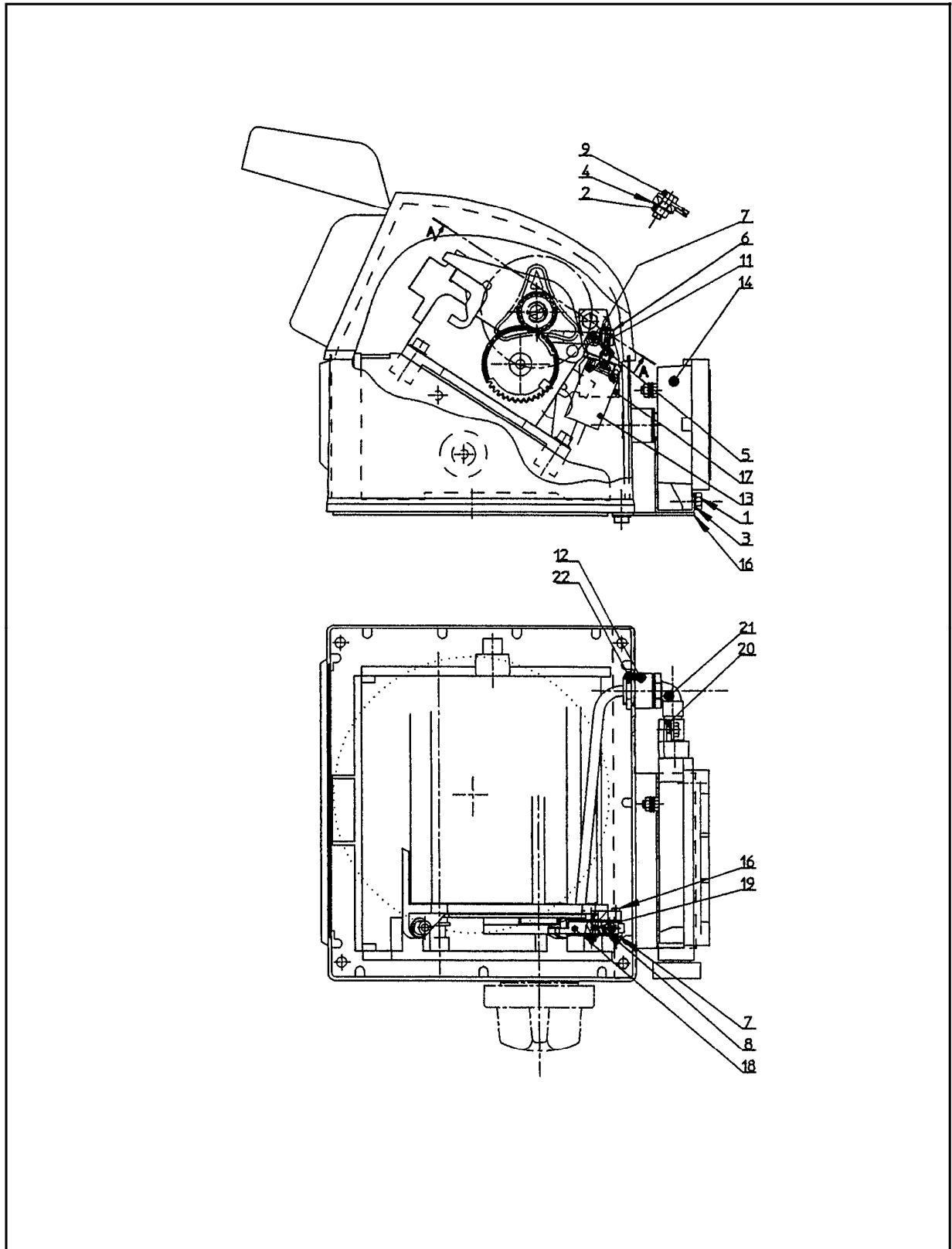
SWIVEL XAB.2 ADJUSTMENT FOR VR 7889 PRESET COUNTER



SWIVEL XAB.2 ADJUSTMENT FOR VR 7889 PRESET COUNTER

Rep	1 REFER2ENCE	Qty	DESCRIPTION
	436680-31		Swivel XAB 2 Adjustment for VR 7889 preset counter
1	26242	3	Pin
2	26249	1	Pin
3	902133-002	1	Pin
4	900497-007	1	Ring
5	26806	1	Truarc ring
6	26837	2	Ring
7	26863	1	Screw
8	900497-004	1	Ring
9	362576	2	Ring
10	903177-002	1	Lead seal
11	355072	2	Washer
12	356556	1	Washer
13	357459	1	Pinion
14	357459-11	1	Pinion
15	357465	1	Rotating joint
16	359123	1	Pinion
17	359128-11	1	Pinion
18	359908-11	1	Conical pinion
19	362730	1	Axle
20	363263	1	Housing for seal
21	363746-11	1	Driver
22	434675	1	Upper stand
23	434676	1	Gear support
24	436681	1	Lower stand
25	638841	1	Pinion

MICRO-SWITCH ANTI-FRAUDE DEVICE ON TICKET PRINTER MODELS VR 7498 AND 7951



MICRO-SWITCH ANTI-FRAUDE DEVICE ON TICKET PRINTER MODELS VR 7498 AND 7951

Rep	¹ REFER2ENCE	Qty	DESCRIPTION
	506379		Micro-switch anti-fraud
1	20070	2	Screw
2	20400	1	Nut
3	25551	2	Washer
4	26742	1	Washer
5	900047-008	1	Truarc ring
6	26824	1	Nut
7	26835	2	Washer
8	26830	2	Nut
9	27094	1	Screw
10	27135	2	Screw
11	27620	1	Screw
12	508327	1	Bulkhead
13	186550	1	Micro-switch
14	434321	1	Connection box
15	506382	1	Indicator box
16	506385	1	Support
17	506388	1	Support
18	506390	1	Lever
19	506391	1	Axle
20	506392	1	Protection pipe
21	506404	1	Elbow
22	692005	1	Nut
	692006	1	O'ring