

<b>Equipment</b>	<b>Multi-function valve</b>		
<b>Model</b>	<b>XAD 36 with electrical control box</b>		
Measured liquids	Liquid hydrocarbons, industrial oils, fatty acid esters, alcohols (option)		
Static pressure	max	15 bar	
Inlet pressure	min / max	0.9 bar / 10 bar	
Liquid temperature	min / max	-10°C / +90°C	14°F / 194°F
Working flow rate (Qn)	max	150m <sup>3</sup> /h - 2500 L/min - 660 USGPM	
Low flow rate adjustment	min / max	15 m <sup>3</sup> /h / 20 m <sup>3</sup> /h	
Liquid viscosity	max	20 mm <sup>2</sup> /s	
Operating differential pressure	max	0.9 bar	
Pressure drop at maximum flowrate	0.5 bar (gasoil @ 20°C)		
<b>Valve body</b>			
Connection nominal size	DN 100 / 4"		
End connection style	Flanges ASA 150 RF		
Body material	Steel (EN 1.0625)		
External coating	Acrylic-epoxy coating - RAL5010, Marine Epoxy coating RAL5010 (option)		
<b>Valve cylinder and piston</b>			
Operating principle	Piston operated by differential pressure with electromechanically controlled inlet circuit.		
Cylinder material	Aluminum (EC AN-42200)		
Piston material	Aluminum (EC AW-5083) with lining		
Seal material /O-ring	Viton , Nitrile (option for alcohols measurement)		
Retaining spring	Stainless steel		
Decompression ball - Thermal relief valve	Calibrated at 0.4 bar		
Adjusting screw	For closing time adjustment		
<b>Electrical control box (AC16)</b>			
Technology	Drive shaft controlled by 2 electromagnets allowing operation in low flow rate and high flow rate.		
Electromagnets specifications	230VAC 60Hz, 220VAC 50Hz, 110VAC 50Hz Peak inrush intensity: 2A, holding intensity: 1A		
<b>Environmental</b>			
Ambient working temperature	min / max	-20°C, -40°C (option) / +40°C	-4°F, -40°F (option) / +104°F
Protection class	IP66		
Storage temperature	min / max	-40°C / +80°C	-40°F / +176°F
<b>Certification</b>			
ATEX approval	Ex d IIB T6 G b		

**SATAM sas****Headquarters & Sales Department**

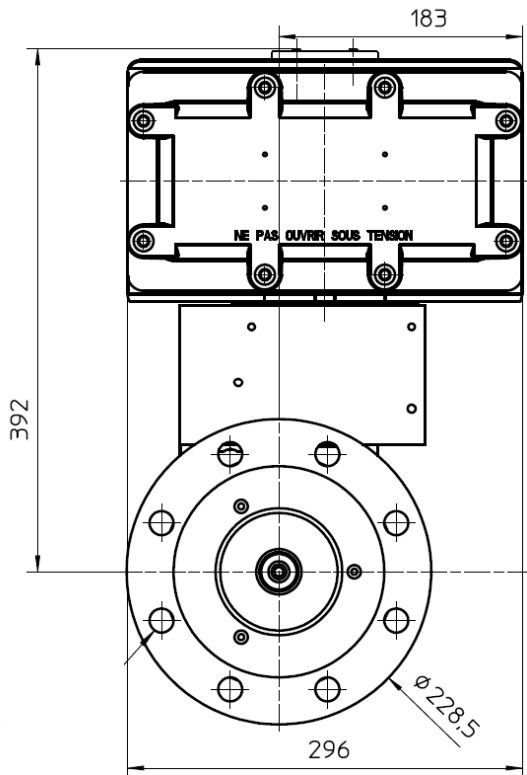
Paris Nord 2 – Bâtiment Le Gauquin  
47, allée des Impressionnistes – BP85012 – Villepinte  
95931 Roissy CDG Cedex – France  
Tel : +33 (0)1 48 63 02 11 – Fax: +33 (0)1 49 38 41 01  
Email : sales@satam.eu

**Manufacturing facility**

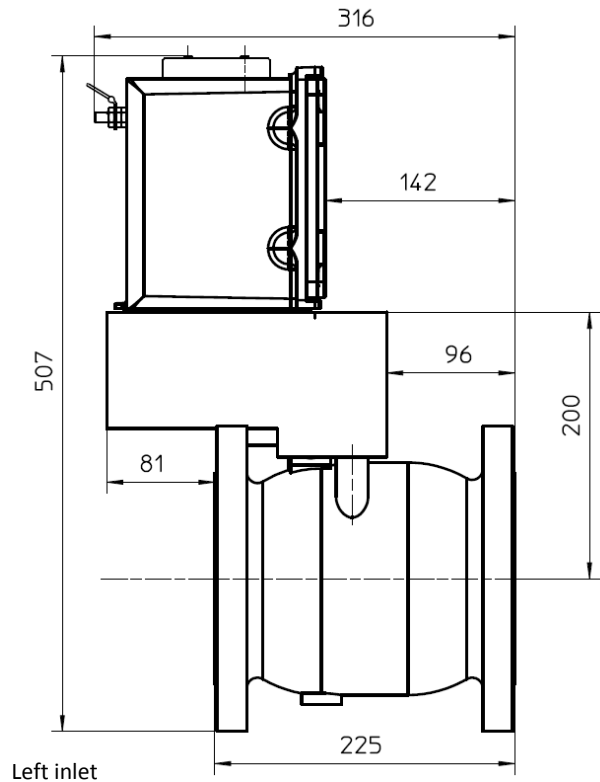
Avenue de Verdun  
14700 Falaise – France  
Tel : +33 (0)2 31 41 41 41  
Fax : +33 (0)2 31 40 75 61

<b>Equipment</b>	<b>Multi-function valve</b>
<b>Model</b>	<b>XAD 36 with AC16 control box</b>

**Dimensions and weight (horizontal installation)**



**Weight : 40 kg**



Left inlet

**SATAM sas**

**Headquarters & Sales Department**

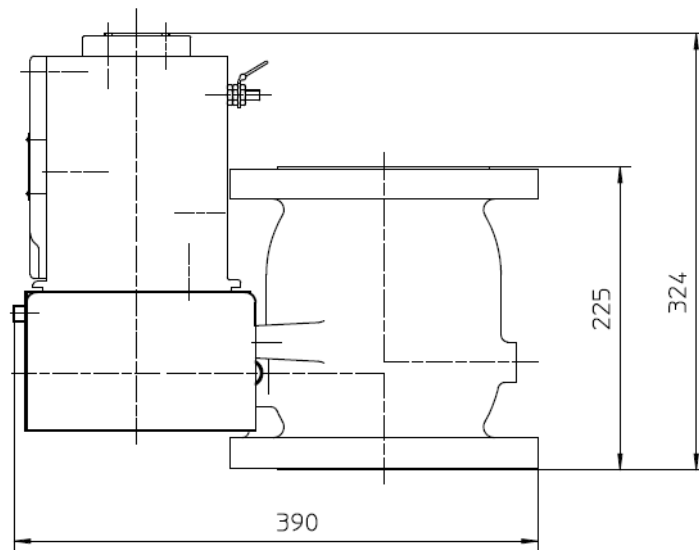
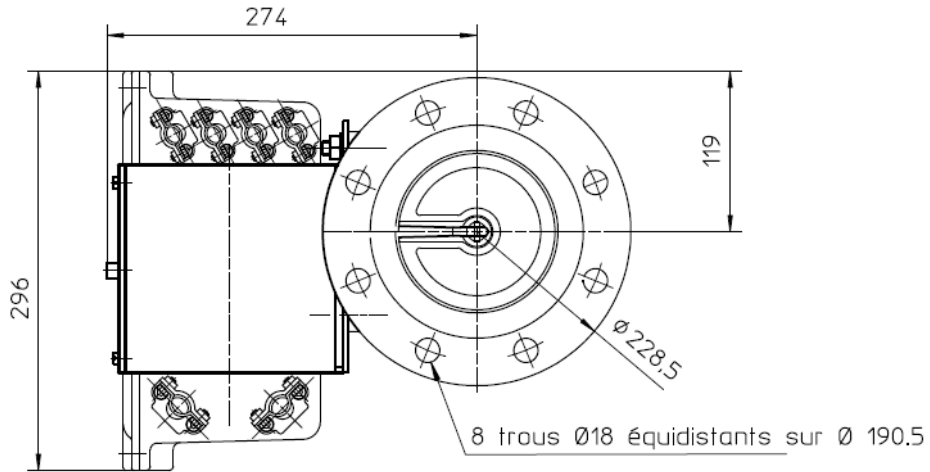
Paris Nord 2 – Bâtiment Le Gauguin  
 47, allée des Impressionnistes – BP85012 – Villepinte  
 95931 Roissy CDG Cedex – France  
 Tel : +33 (0)1 48 63 02 11 – Fax: +33 (0)1 49 38 41 01  
 Email : sales@satam.eu

**Manufacturing facility**

Avenue de Verdun  
 14700 Falaise – France  
 Tel : +33 (0)2 31 41 41 41  
 Fax : +33 (0)2 31 40 75 61

<b>Equipment</b>	<b>Multi-function valve</b>
<b>Model</b>	<b>XAD 36 with AC16 control box</b>

**Dimensions and weight (vertical installation)**



**Weight : 40 kg**

**SATAM sas**

**Headquarters & Sales Department**

Paris Nord 2 – Bâtiment Le Gauguin  
 47, allée des Impressionnistes – BP85012 – Villepinte  
 95931 Roissy CDG Cedex – France  
 Tel : +33 (0)1 48 63 02 11 – Fax: +33 (0)1 49 38 41 01  
 Email : sales@satam.eu

**Manufacturing facility**

Avenue de Verdun  
 14700 Falaise – France  
 Tel : +33 (0)2 31 41 41 41  
 Fax : +33 (0)2 31 40 75 61

[www.satam.eu](http://www.satam.eu)

DS023-Rev04-09/18-Marketing Satam  
 Subject to modification without prior notice